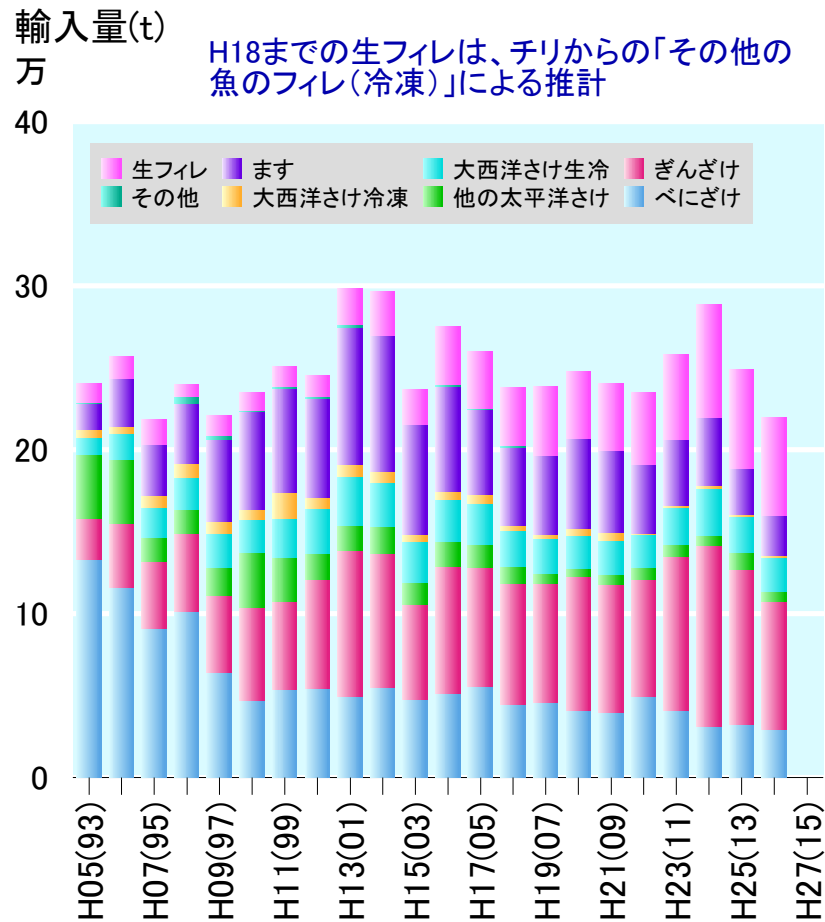
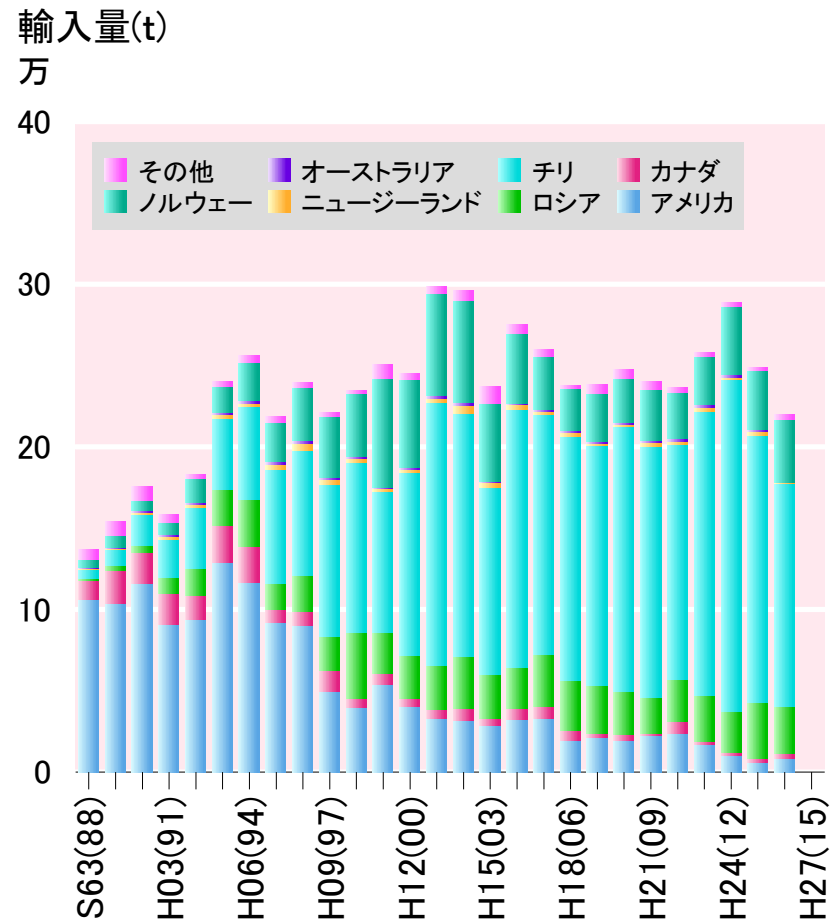


輸入 さけますの輸入量

品目別

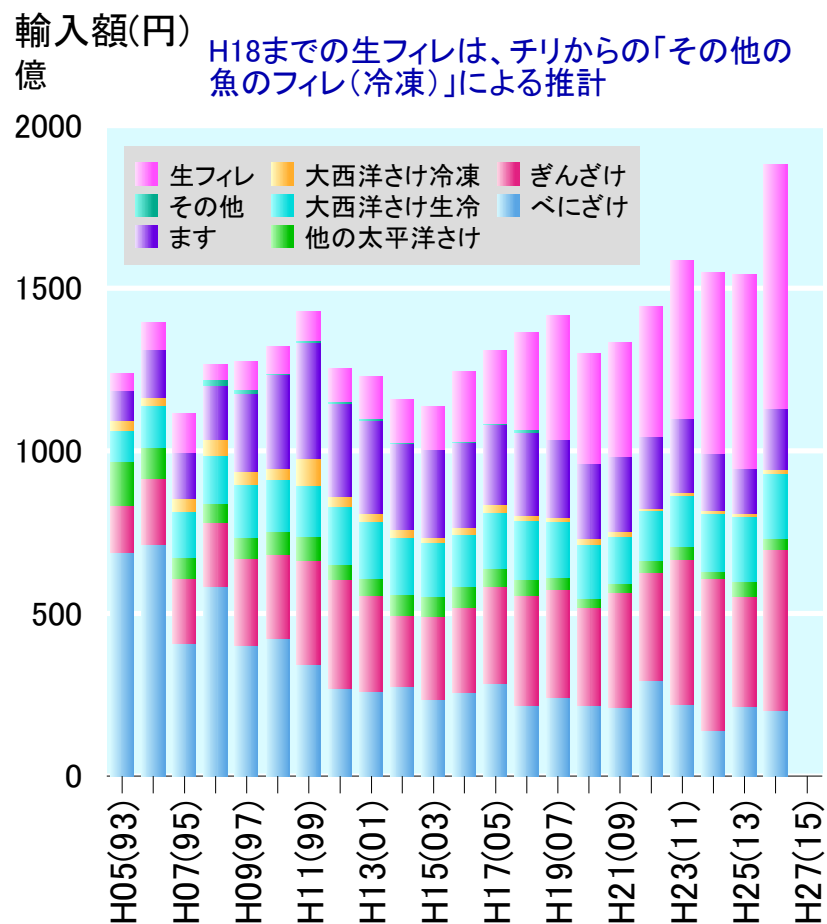


国別

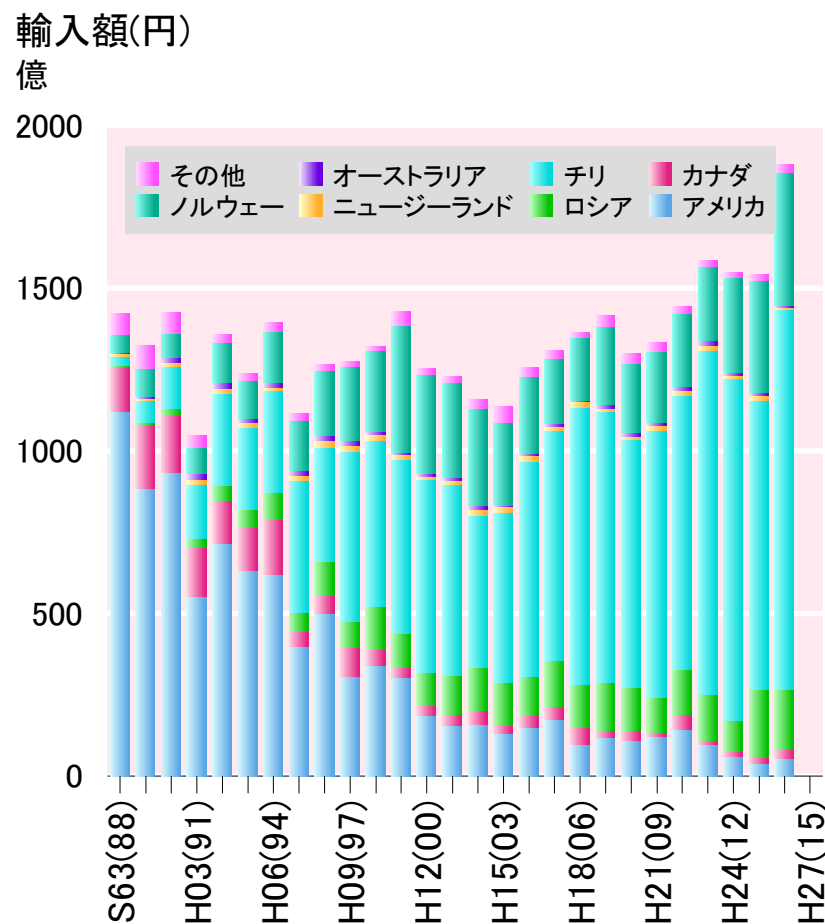


輸入 さけますの輸入額

品目別

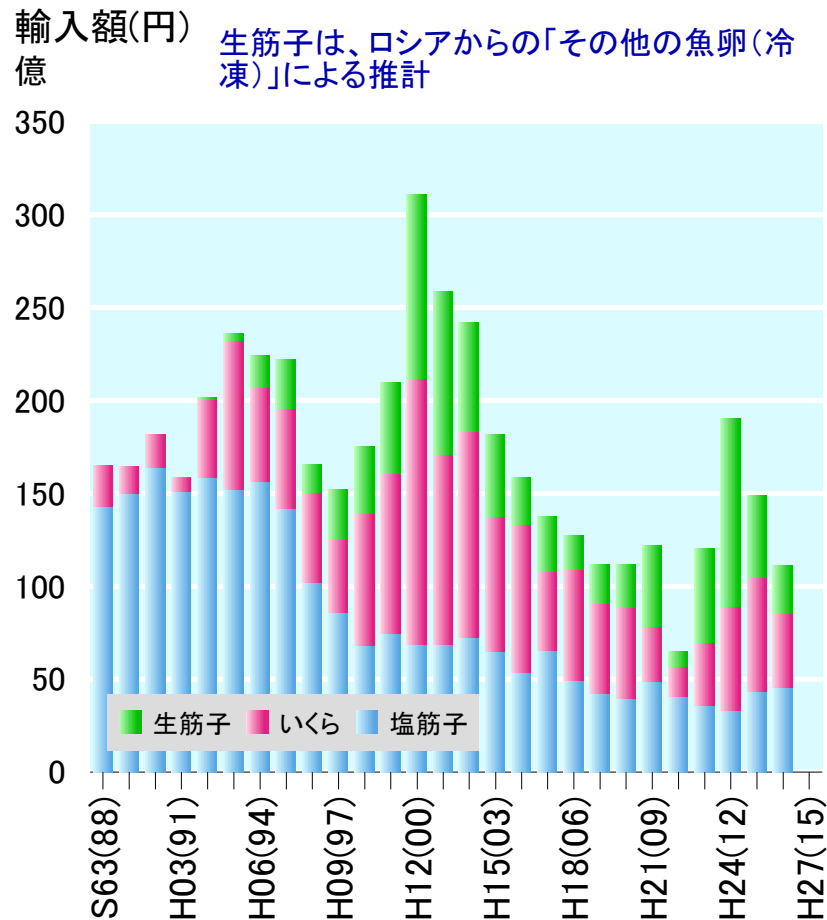


国別

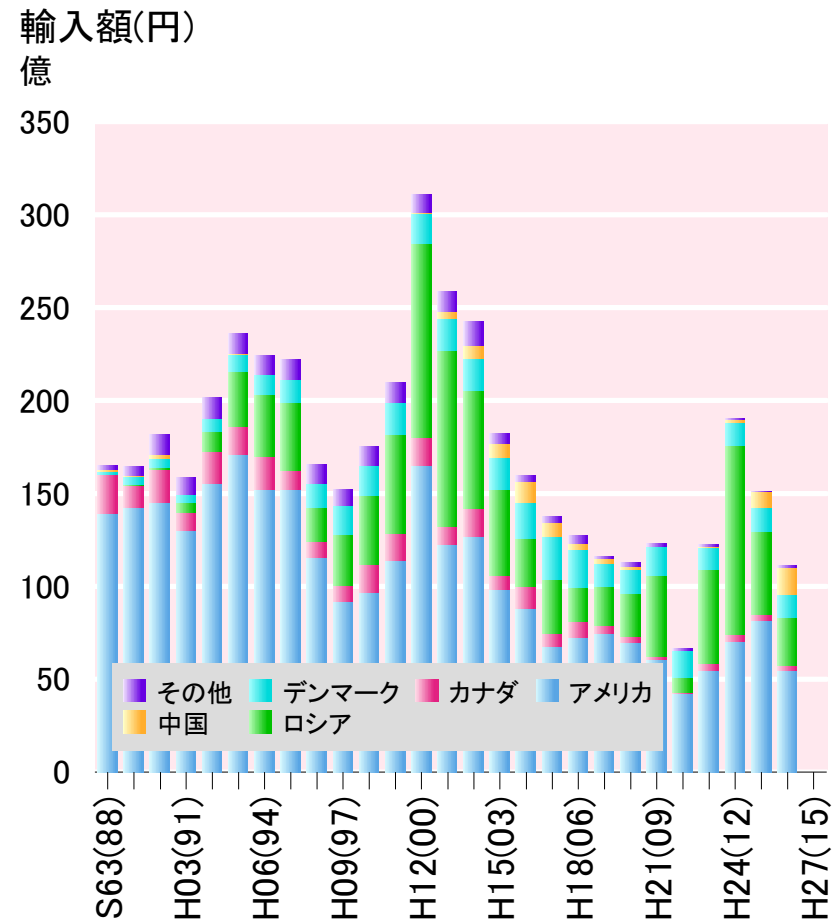


輸入 さけますの卵の輸入額

品目別

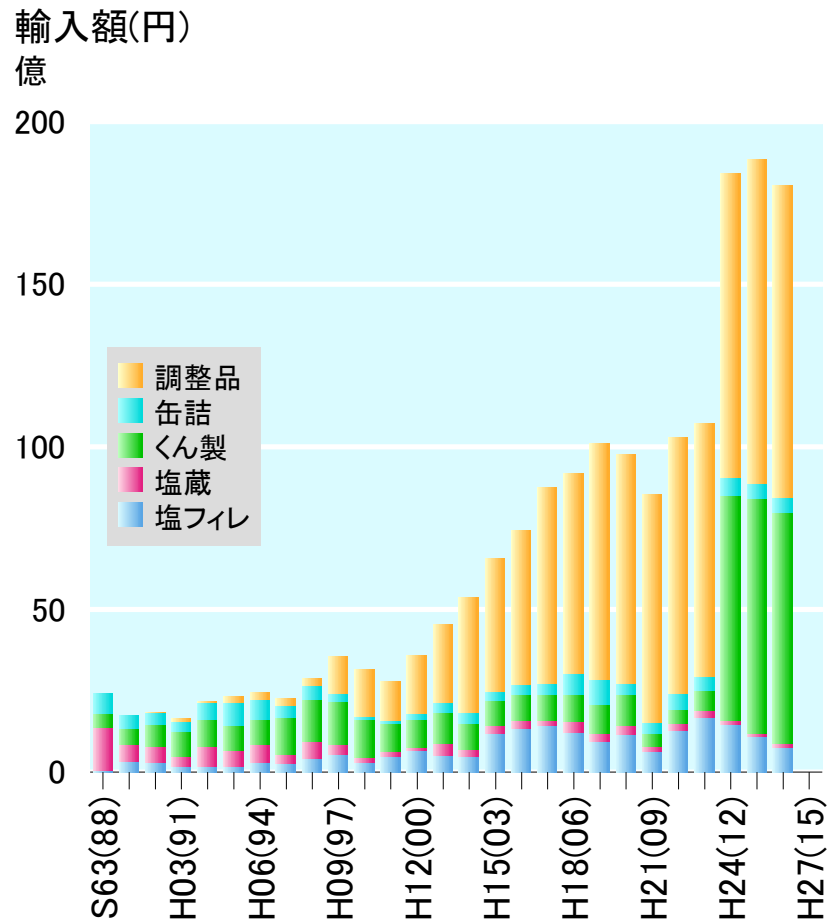


国別

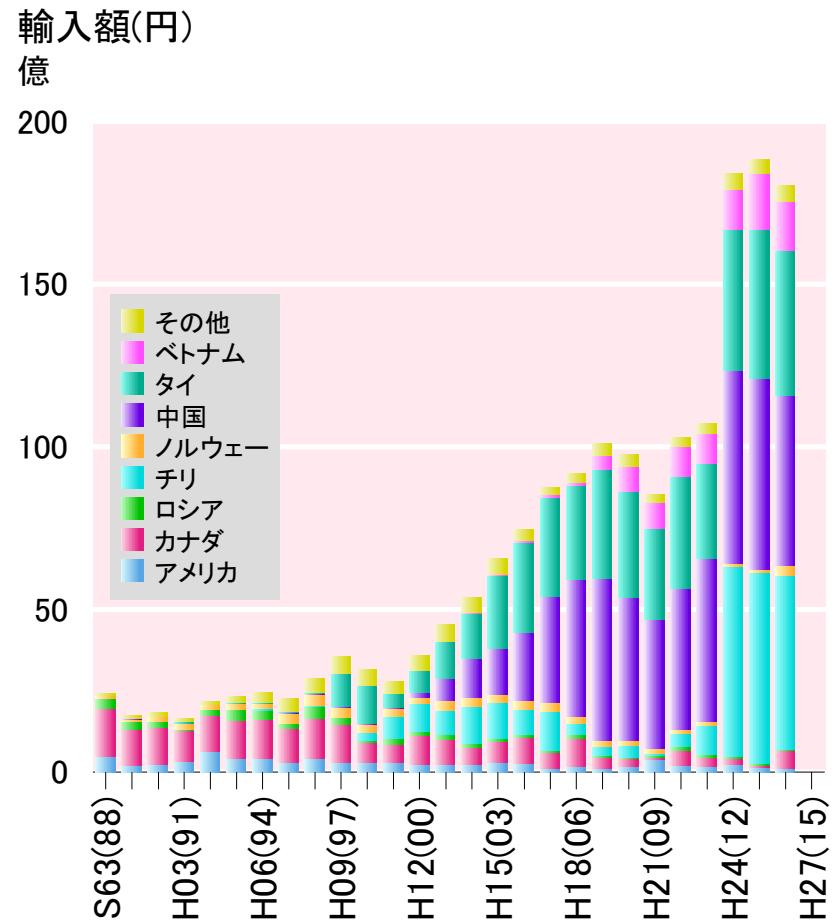


輸入 さけますの加工品の輸入額

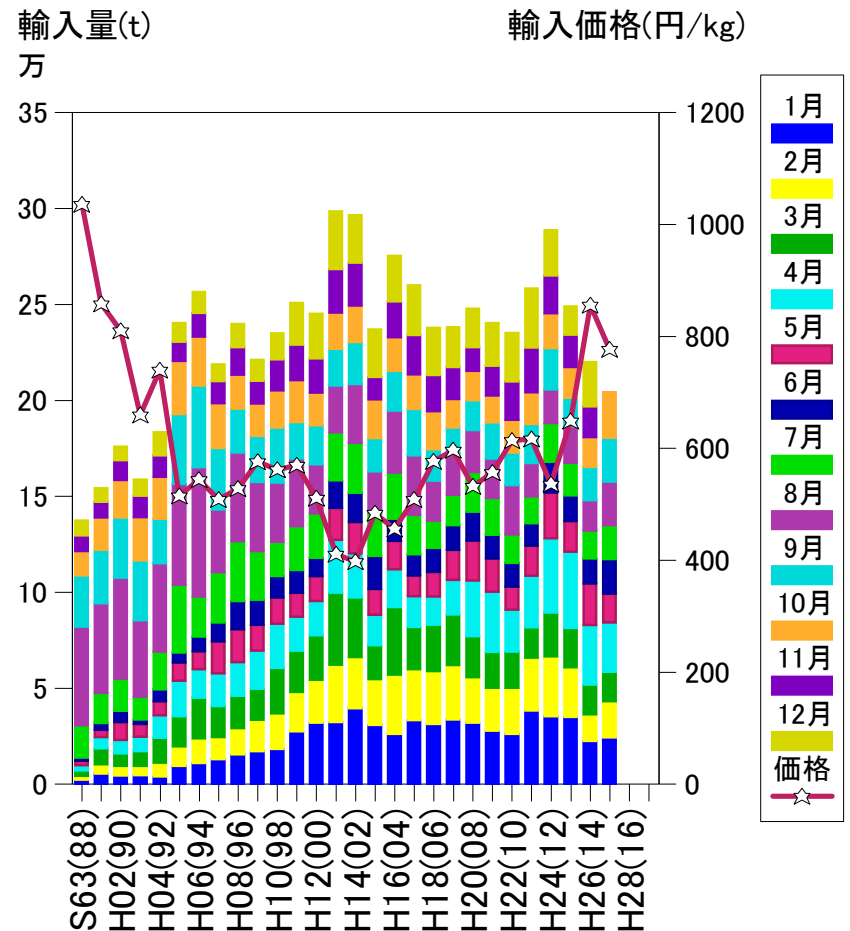
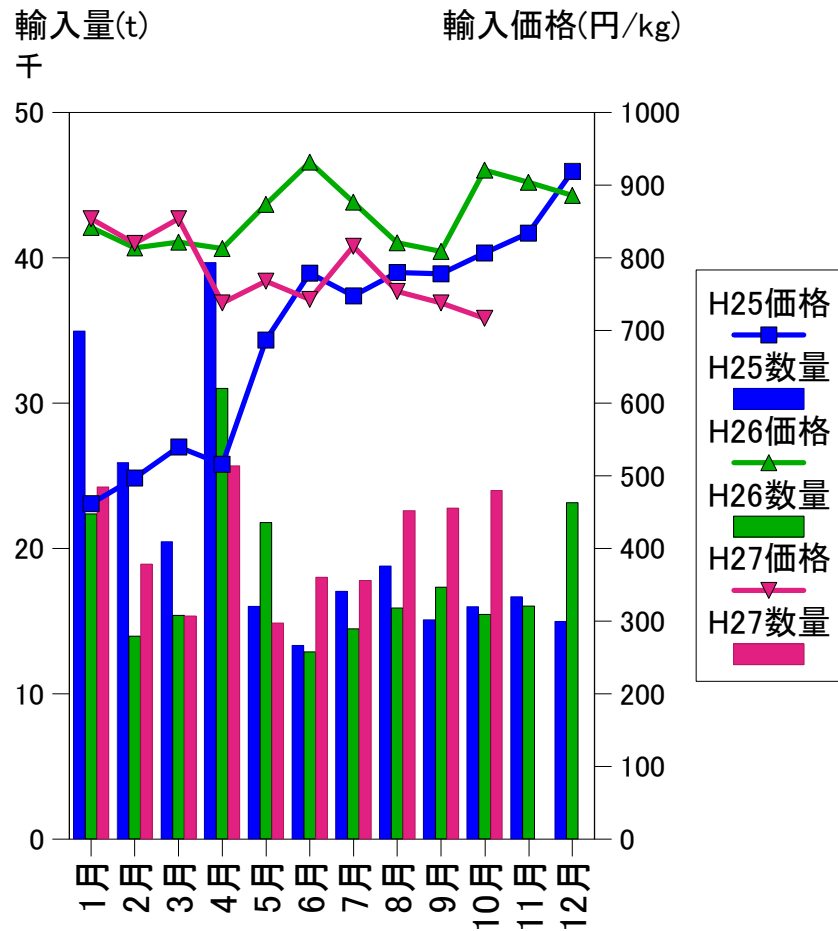
品目別



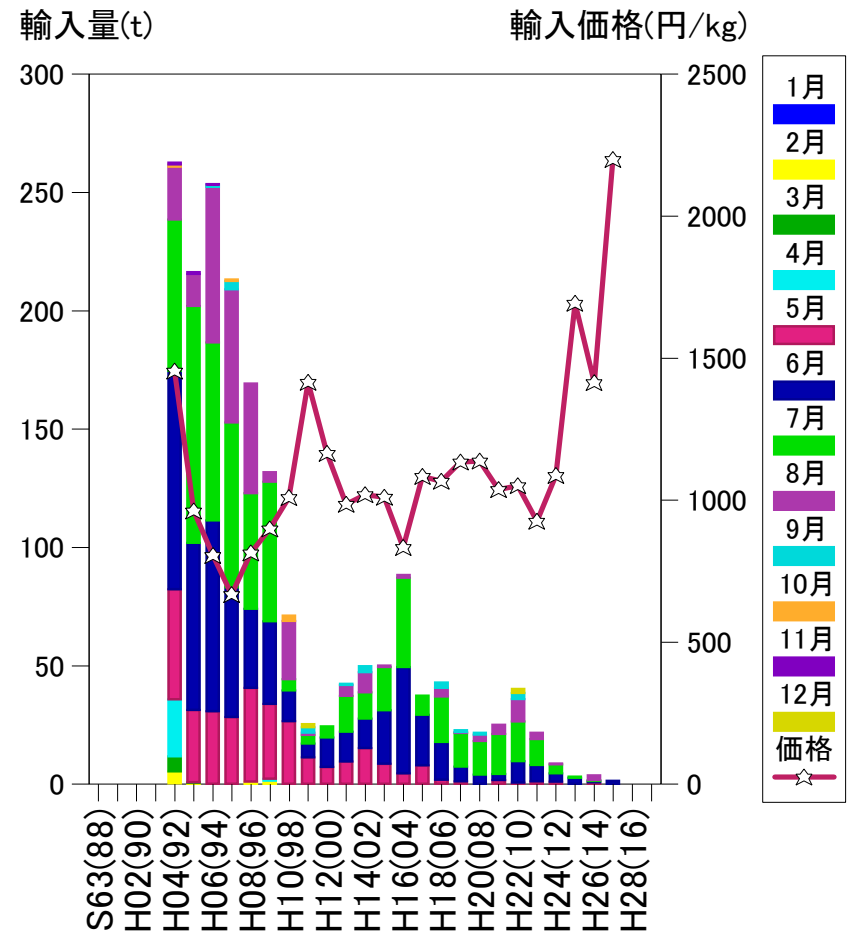
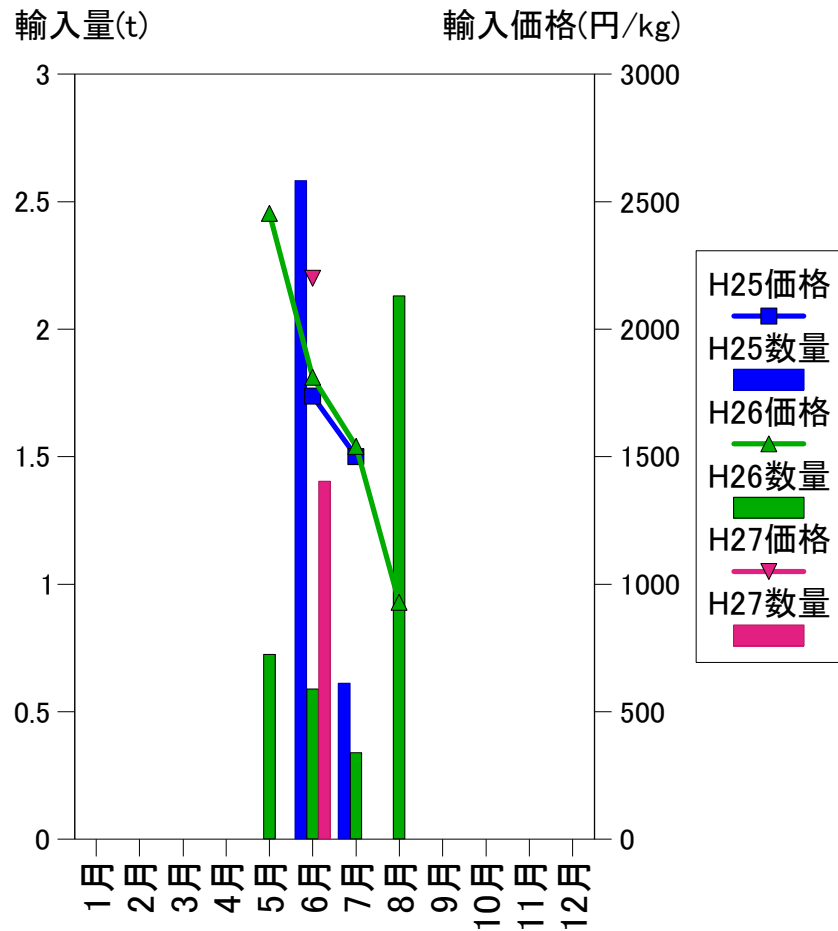
国別



輸入 さけます合計(生鮮冷蔵+冷凍、生フィレ含む)

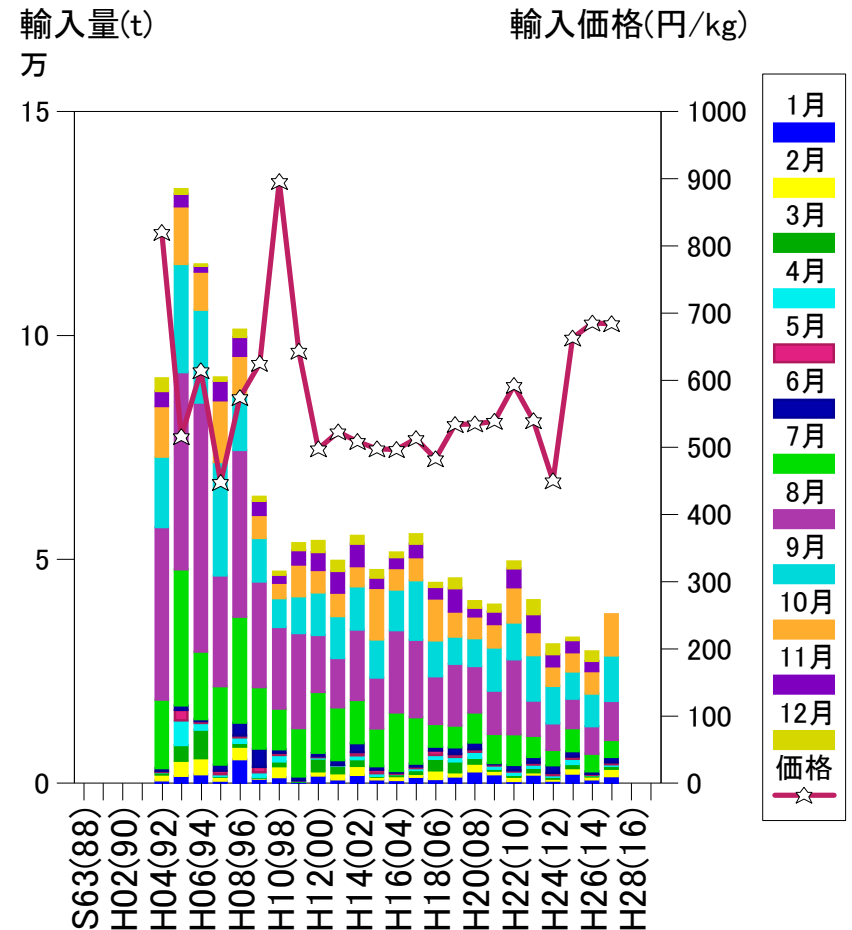
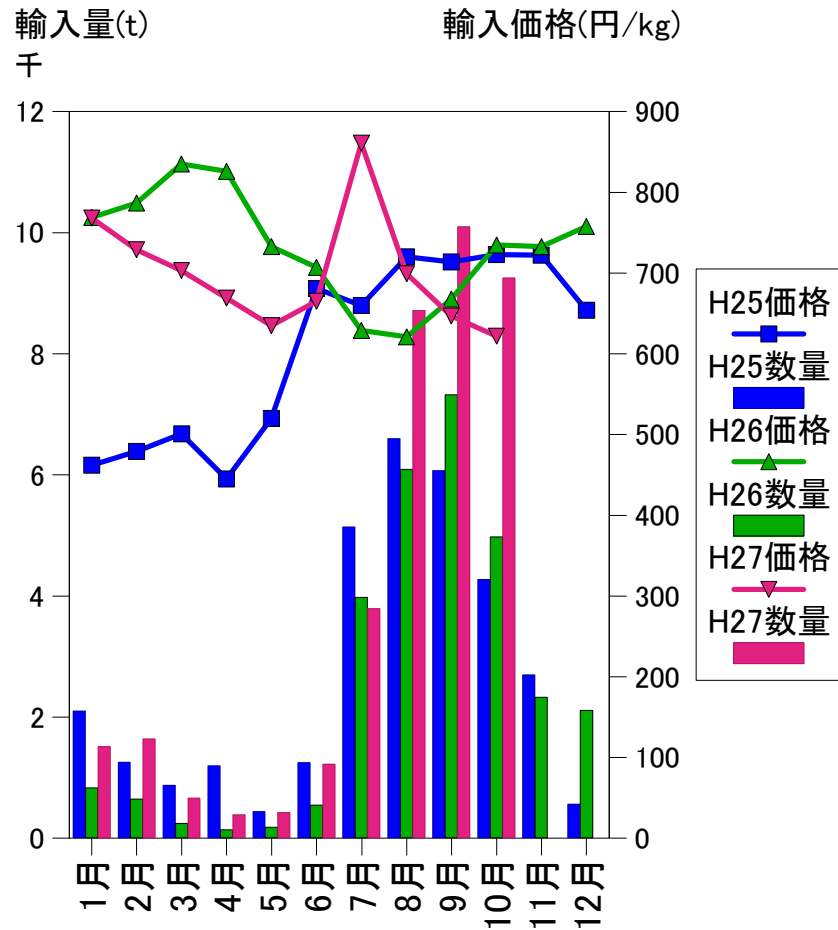


輸入 べにざけ(生鮮冷蔵)



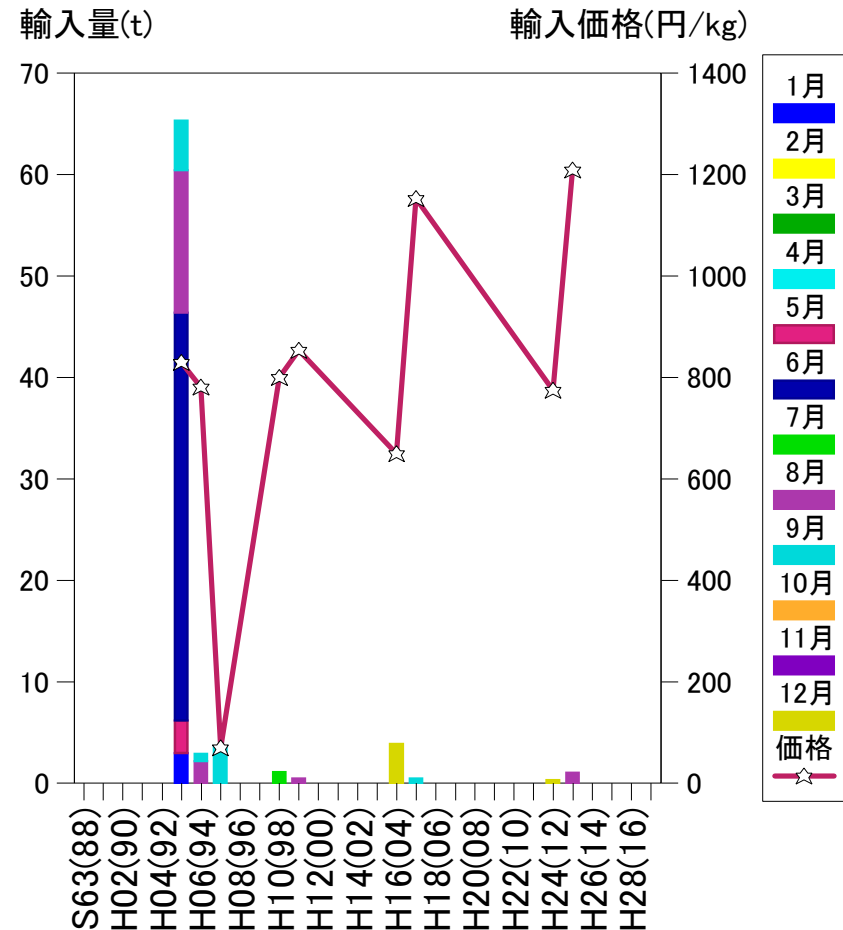
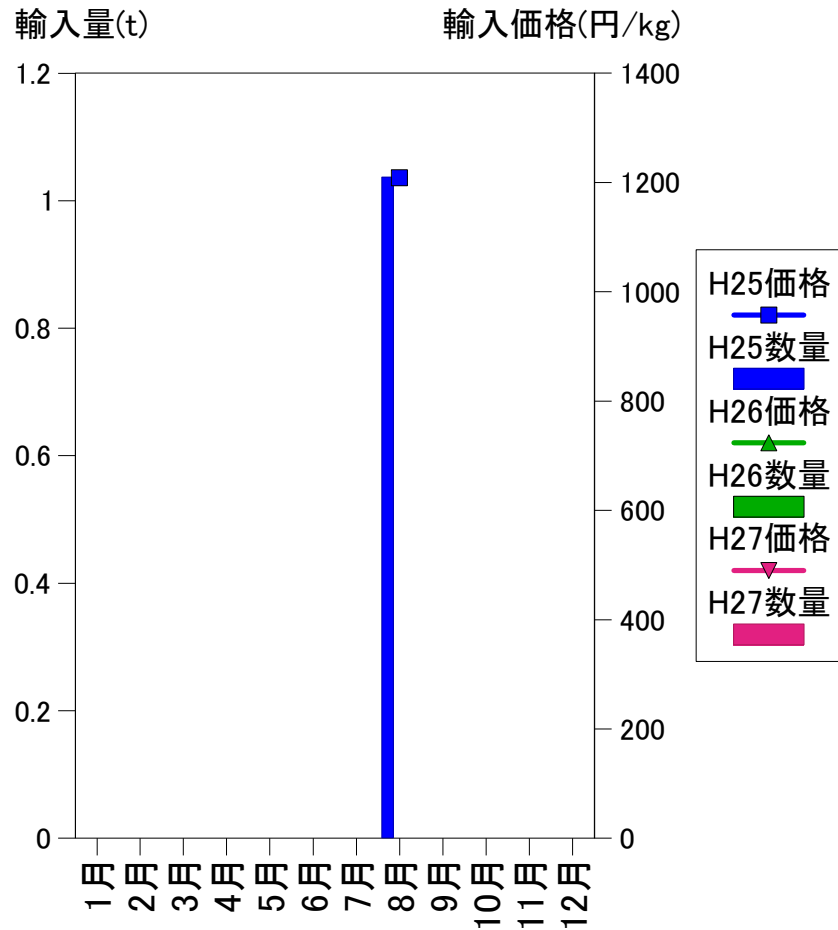
HS 0302.12-011 (H23まで)、0302.13-011 (H24から)

輸入 べにざけ(冷凍)



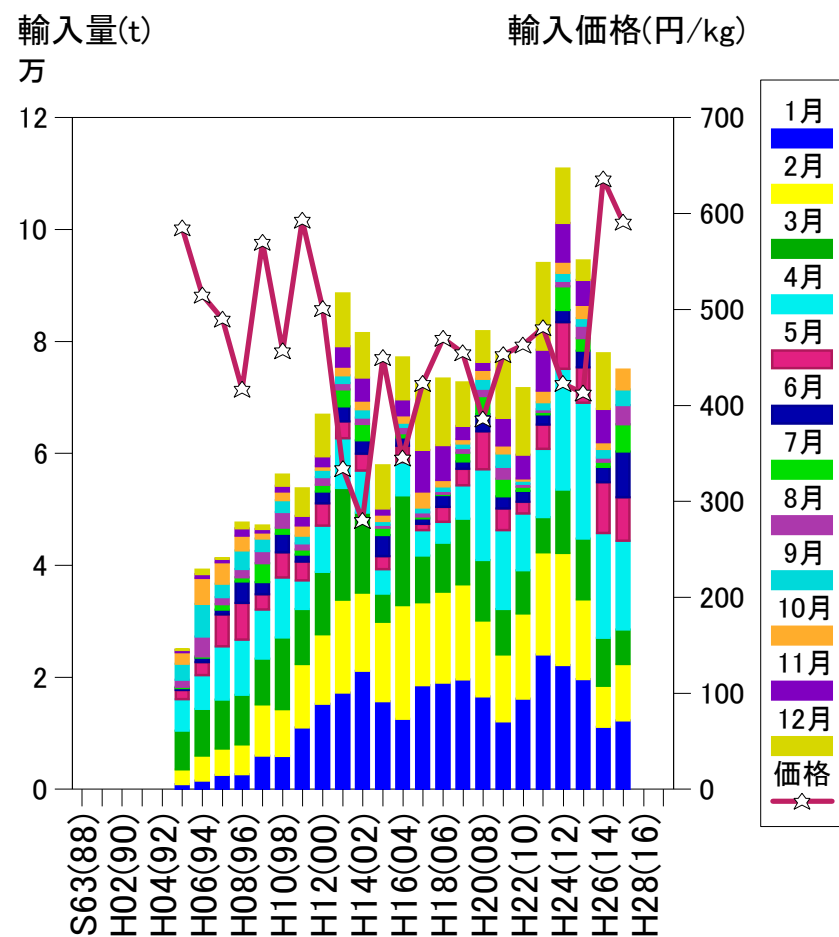
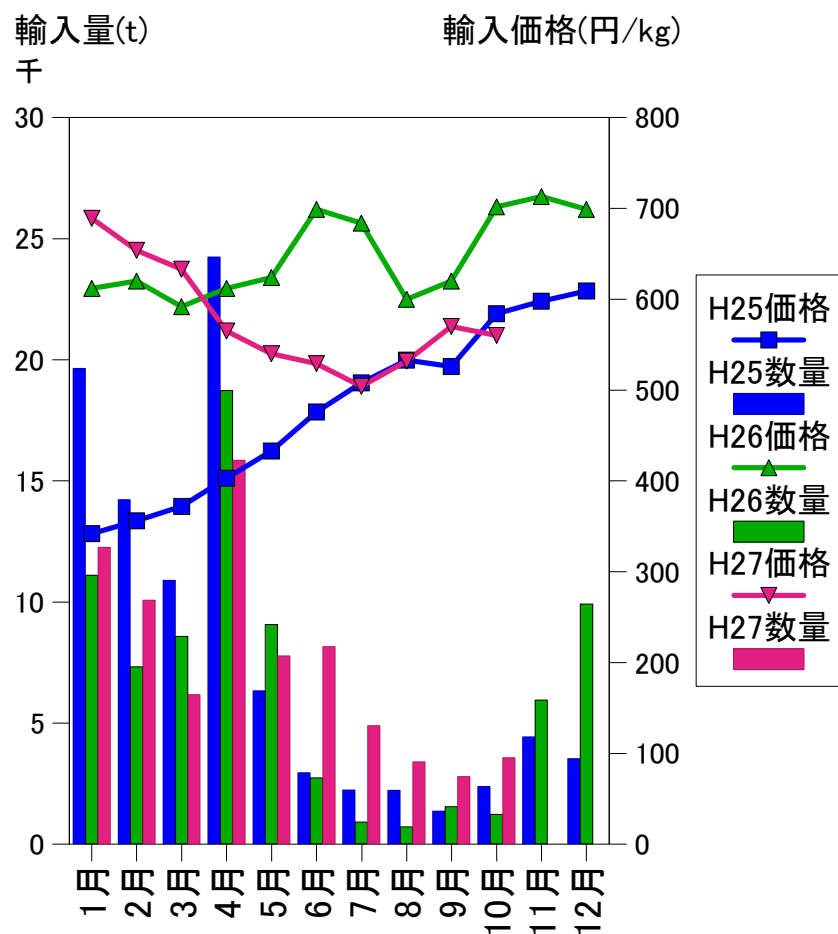
HS 0303.10-010(H13まで)、0303.11-000(H14から)

輸入 ぎんざげ(生鮮冷蔵)



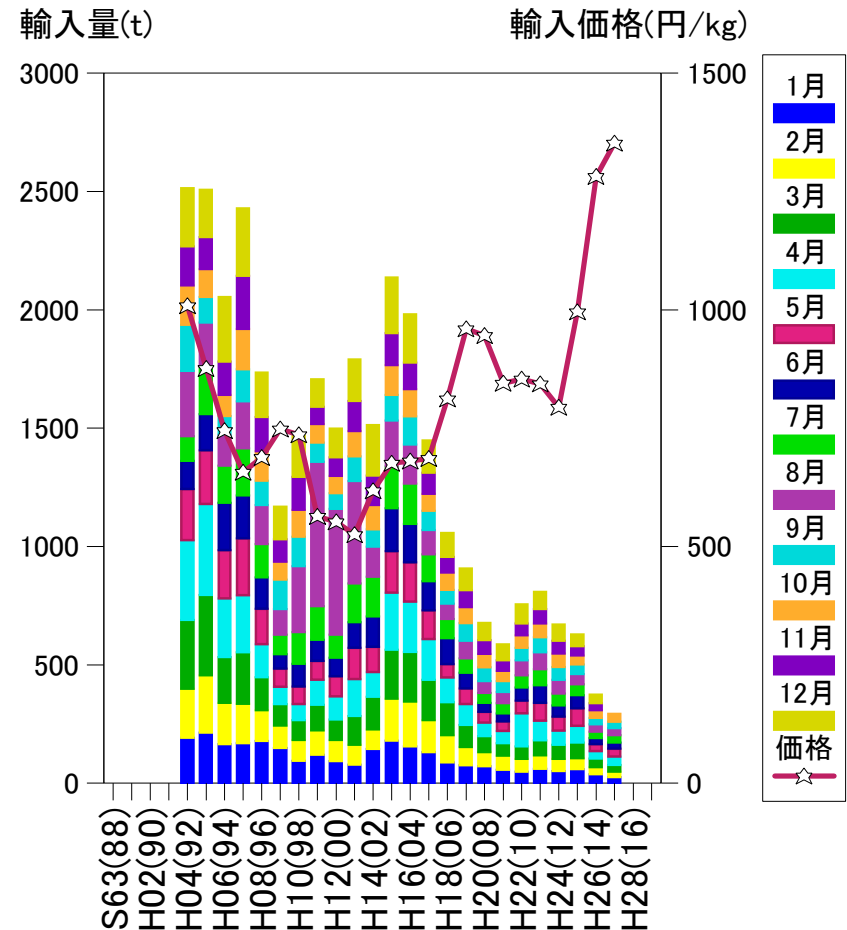
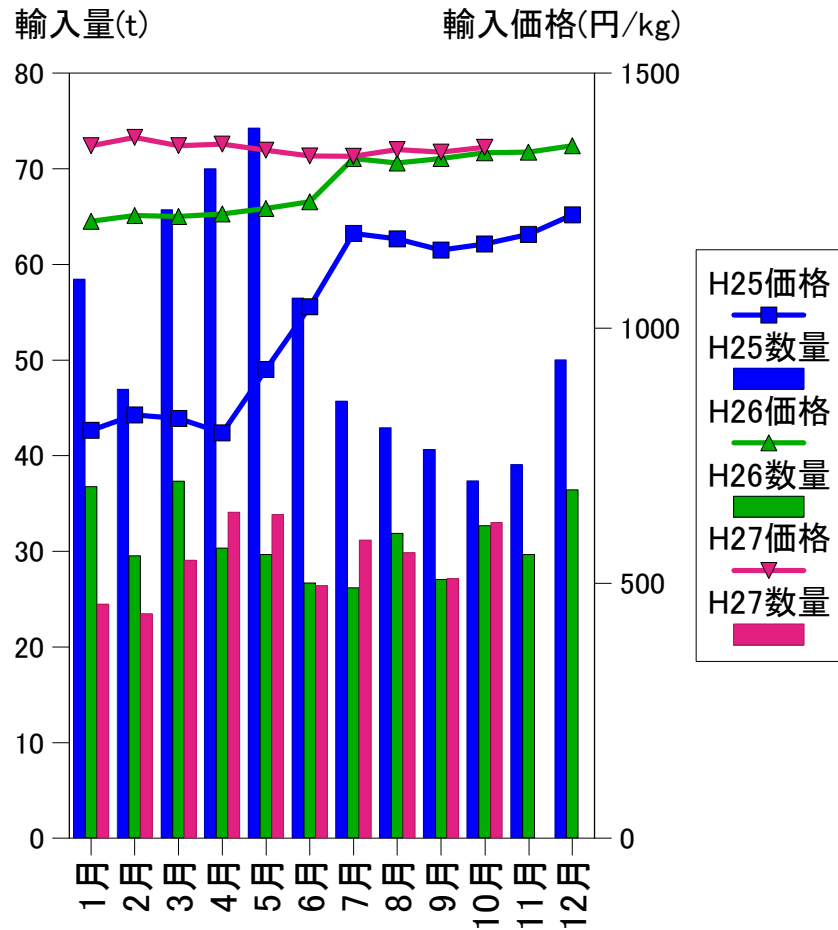
HS 0302.12-012 (H23まで)、0302.13-012 (H24から)

輸入 ぎんざけ(冷凍)



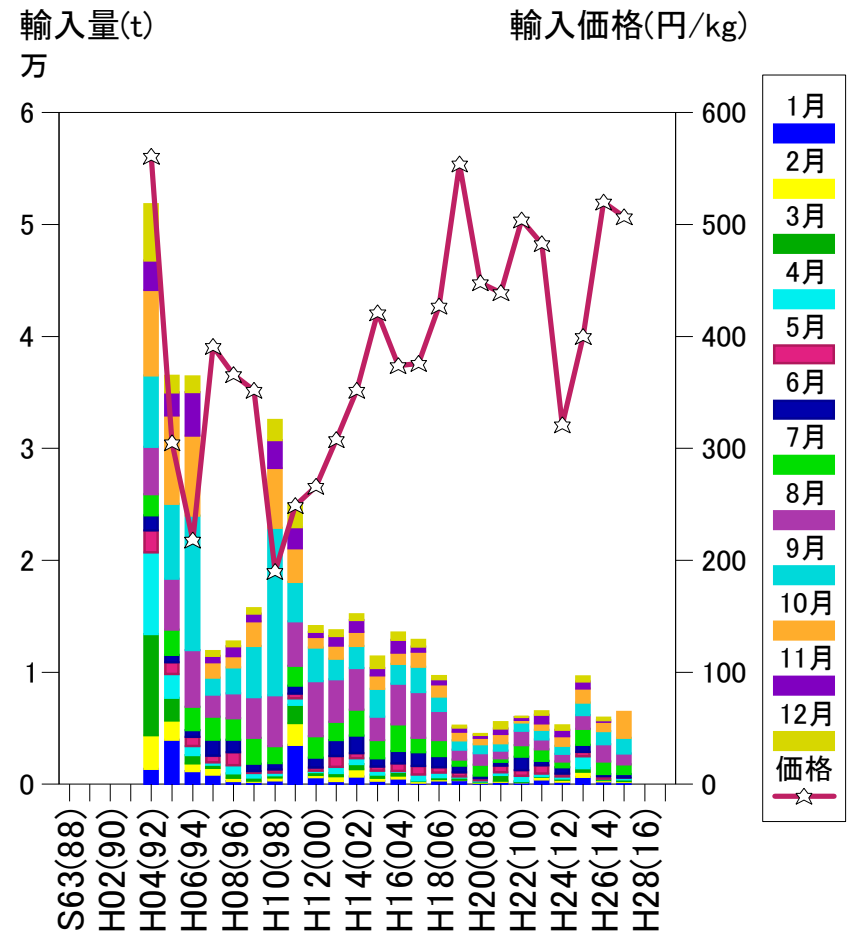
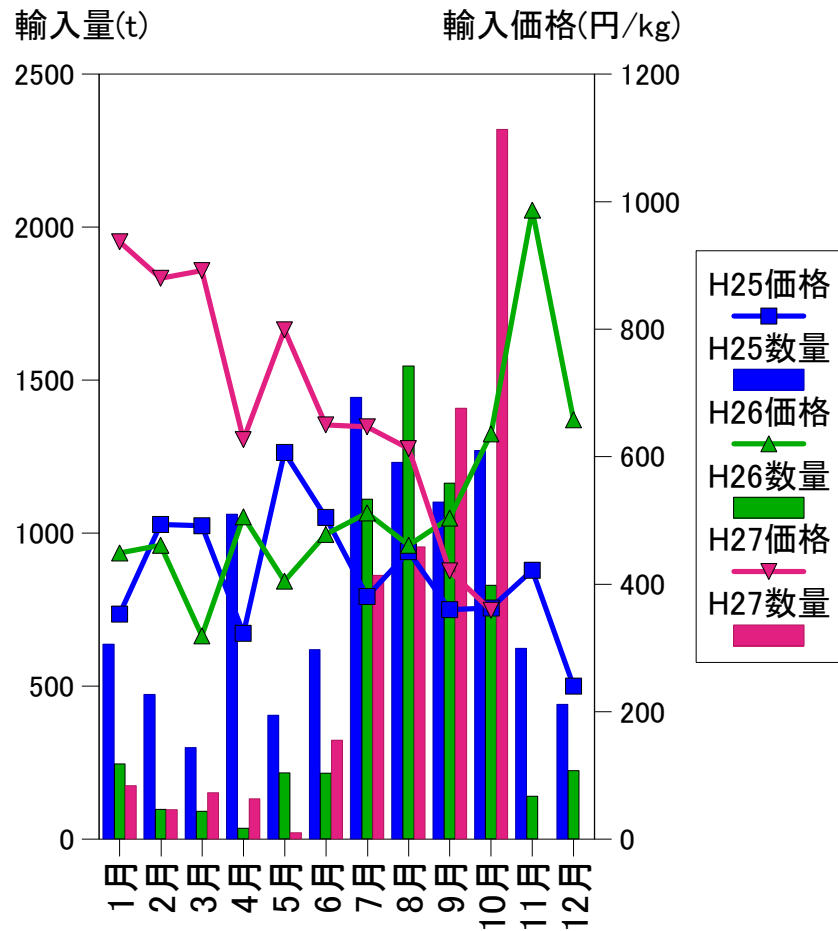
HS 0302.10-020(H13まで)、0303.19-010(H14からH23まで)、HS 0303.12-010(H24から)

輸入 べに、ぎん以外の太平洋さけ(生鮮冷蔵)



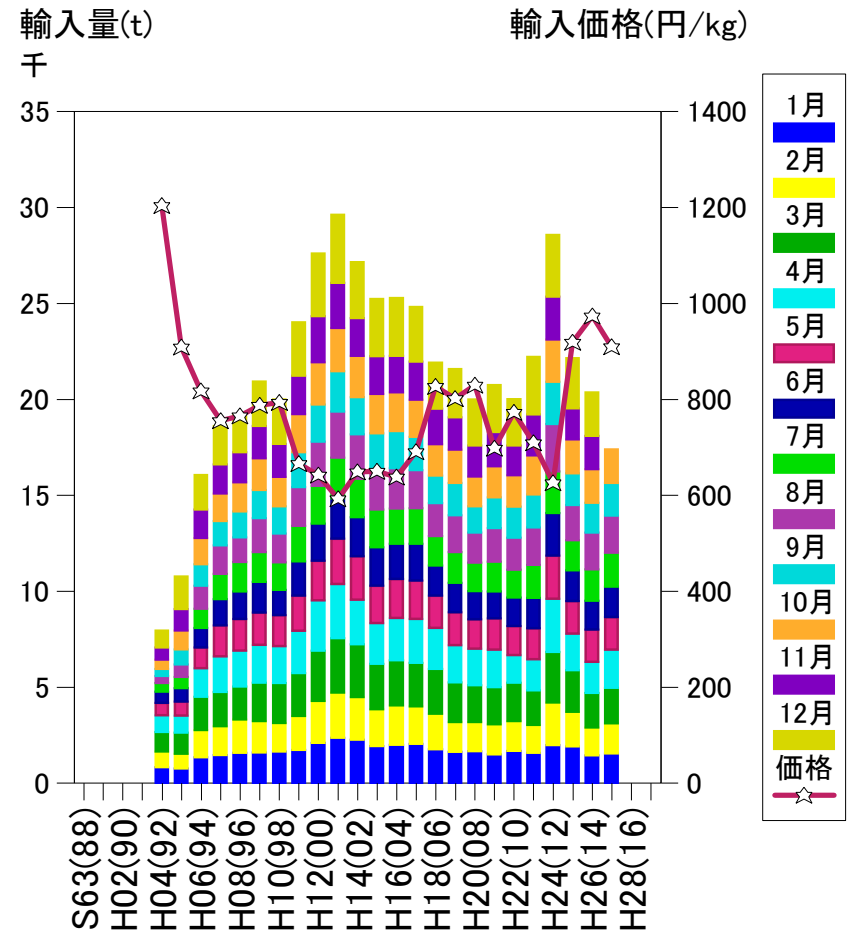
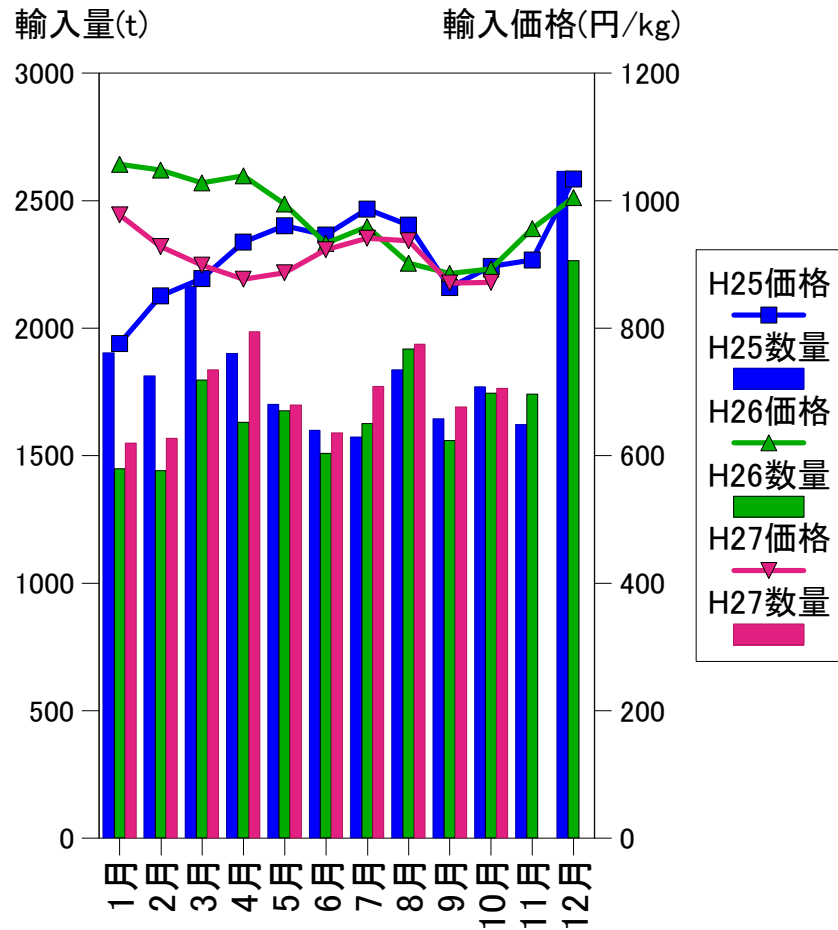
HS 0302.12-019(H23まで)、0302.13-019(H24から)

輸入 べに、ぎん以外の太平洋さけ(冷凍)



HS 0303.10-090(H13まで), 0303.19-090(H14からH23まで), 0303.12-090(H24から)

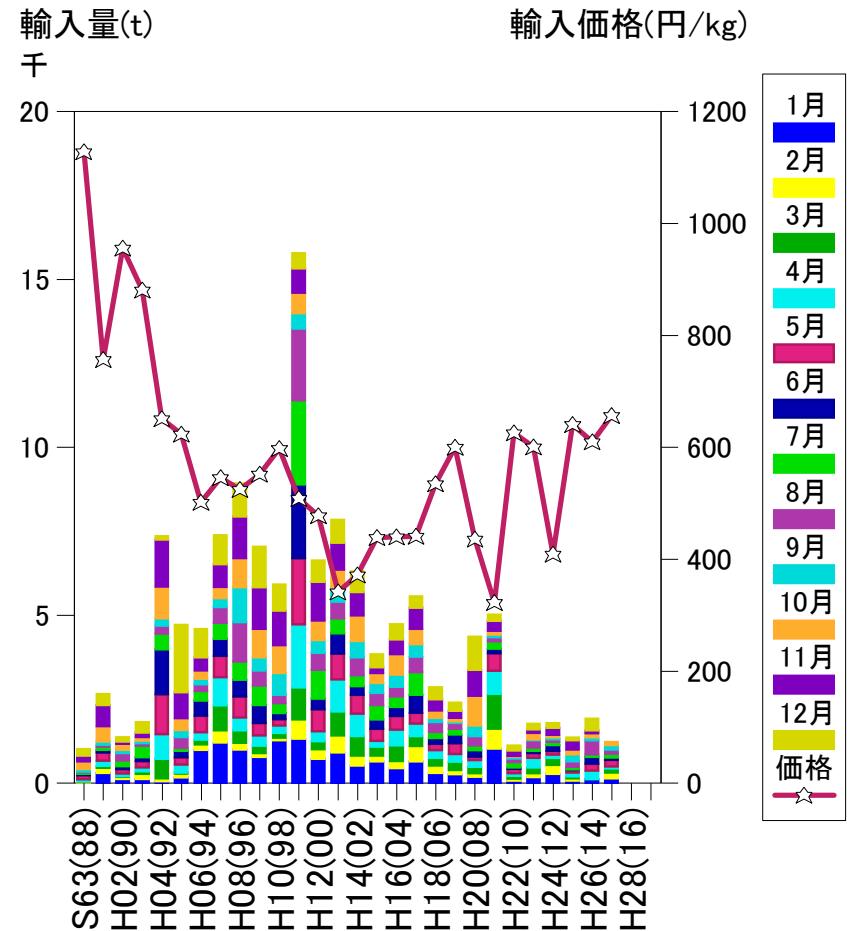
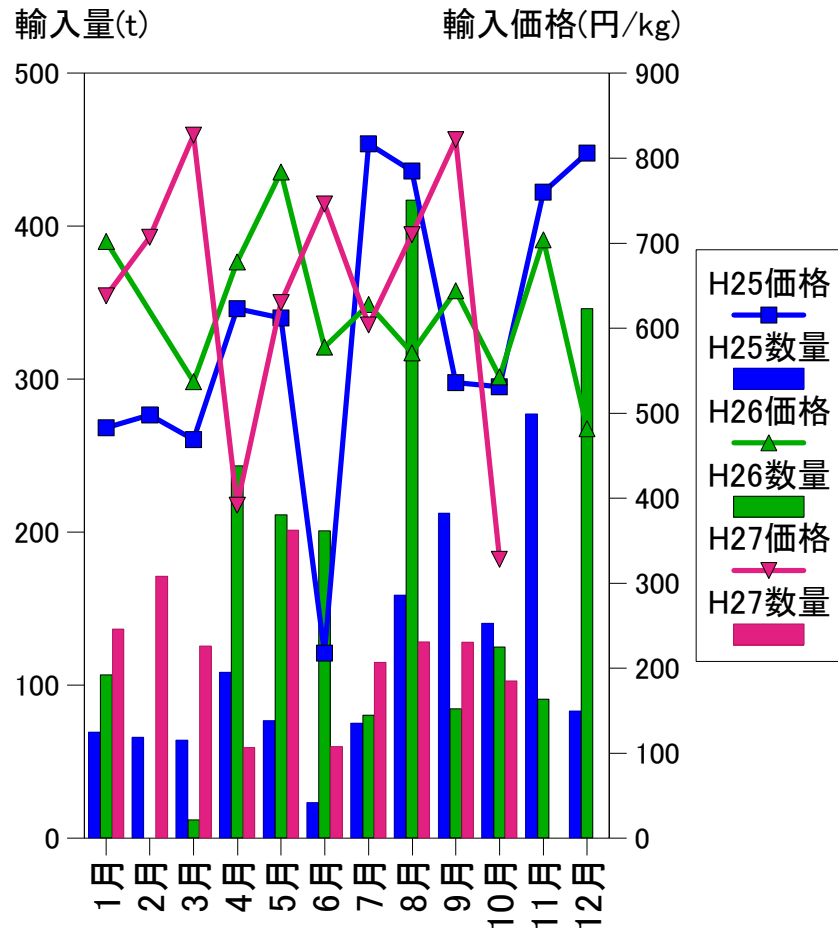
輸入 大西洋さけ(生鮮冷蔵)



HS 0302.12-020(H23まで)、0302.14-000(H24から)

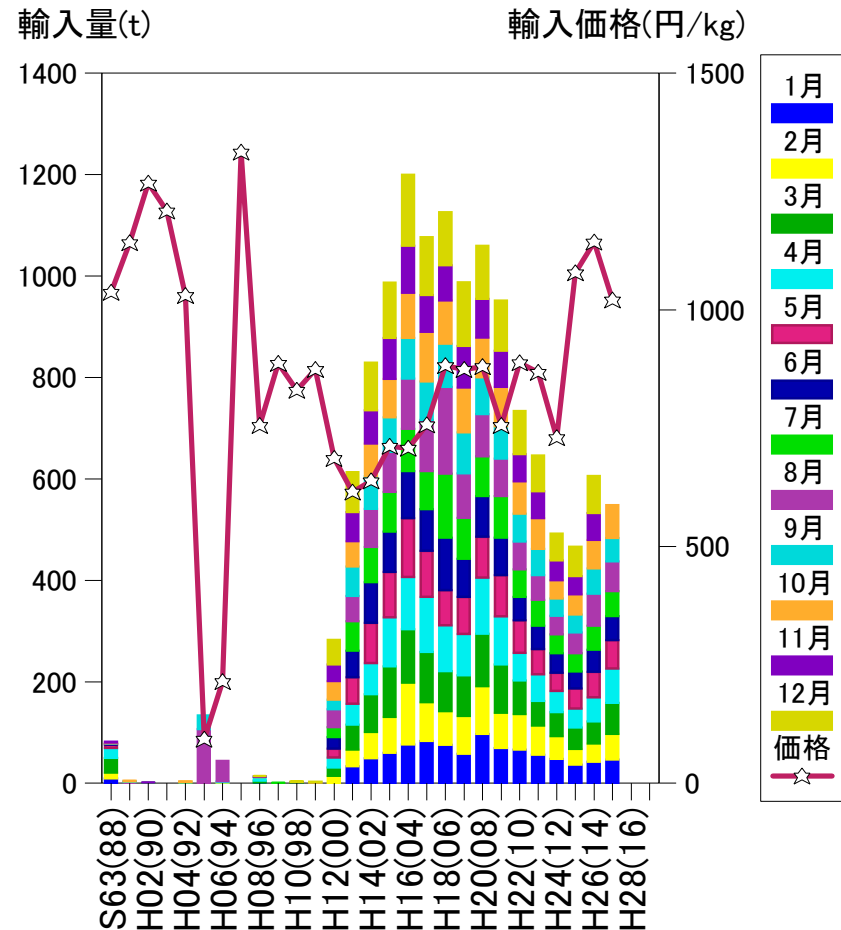
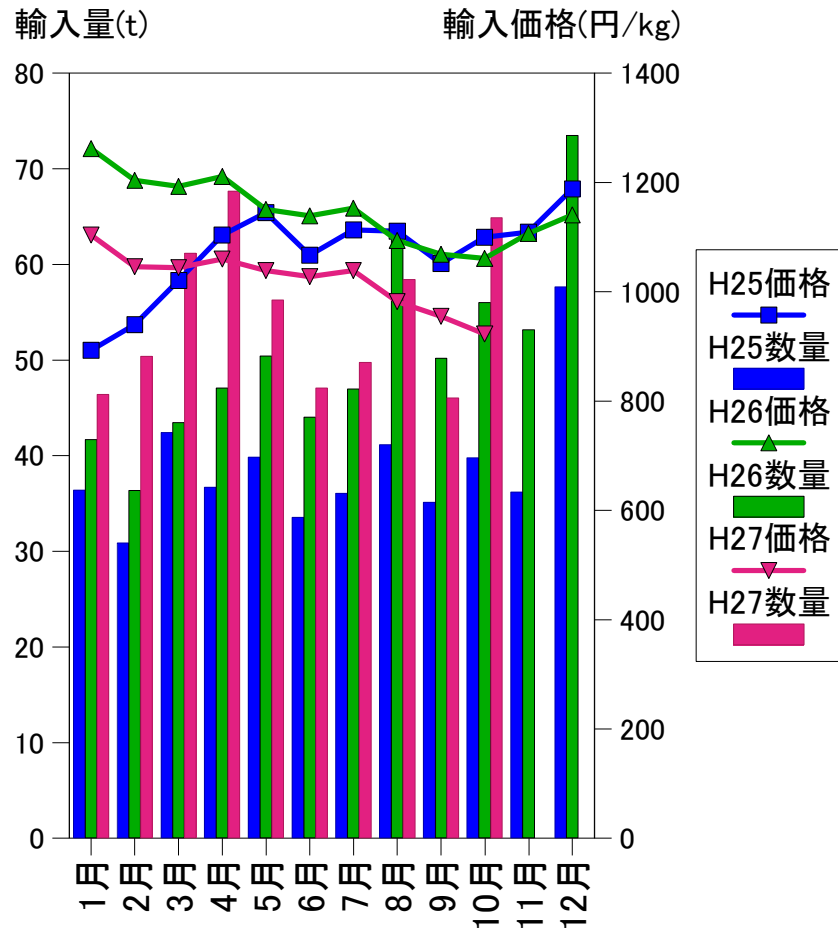
輸入 大西洋さけ(冷凍)

HS 0303.22-000(H23まで)、0303.13-000(H24から)



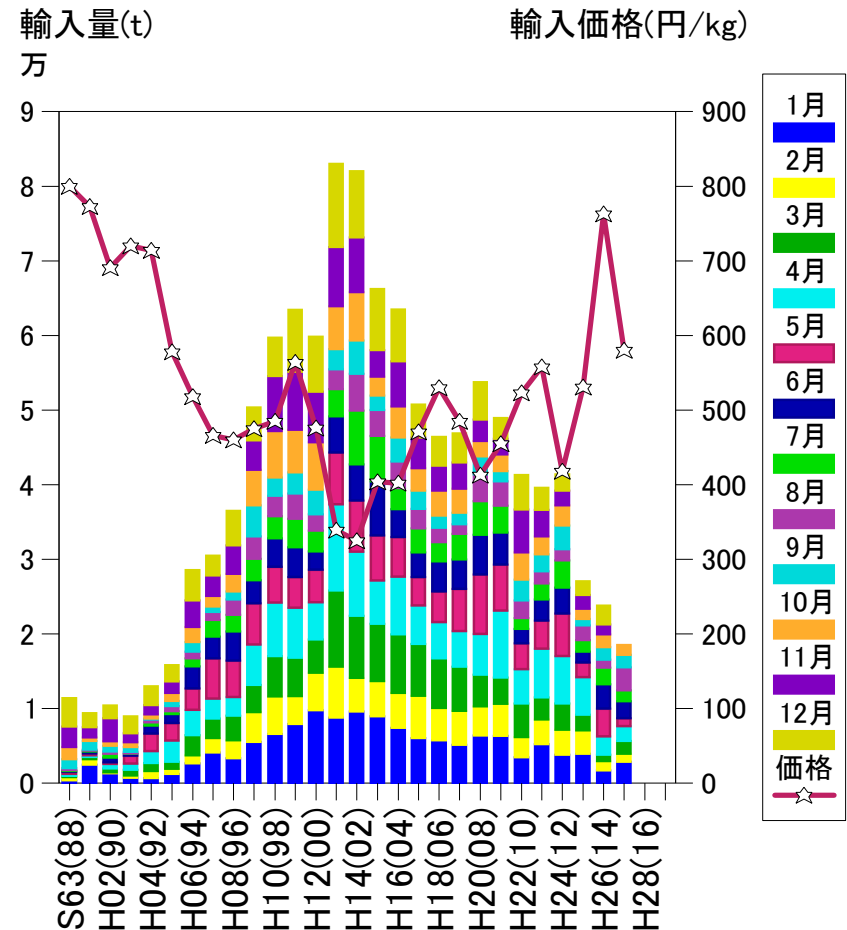
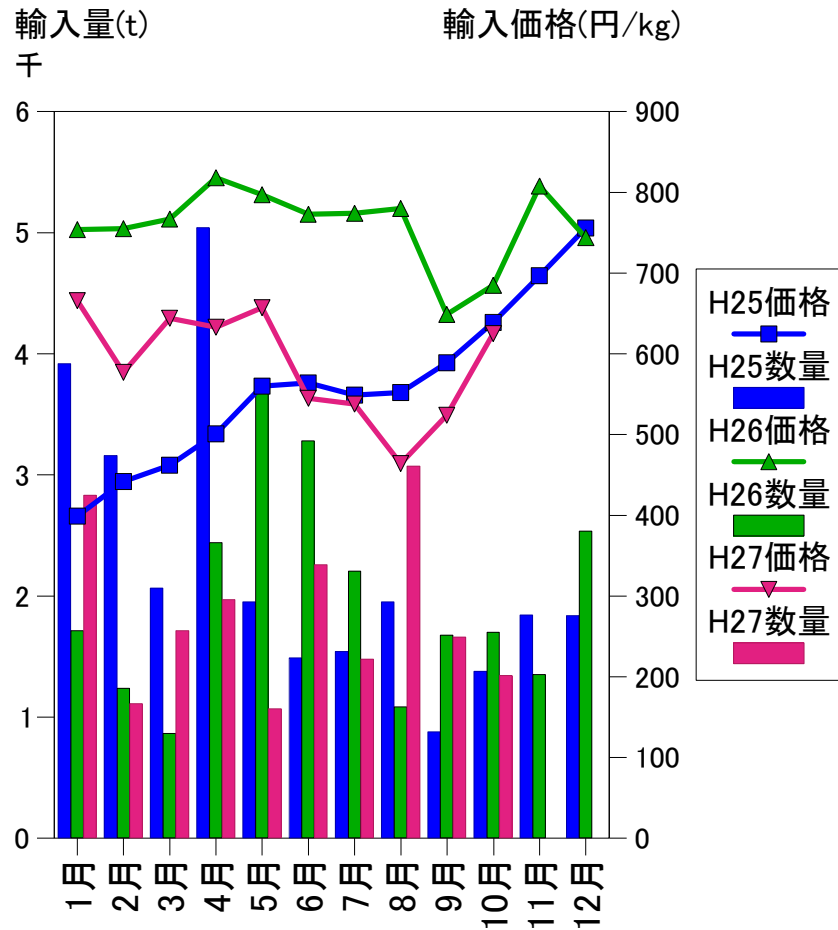
HS 0303.22-000(H23まで)、0303.13-000(H24から)

輸入 ます(生鮮冷蔵)



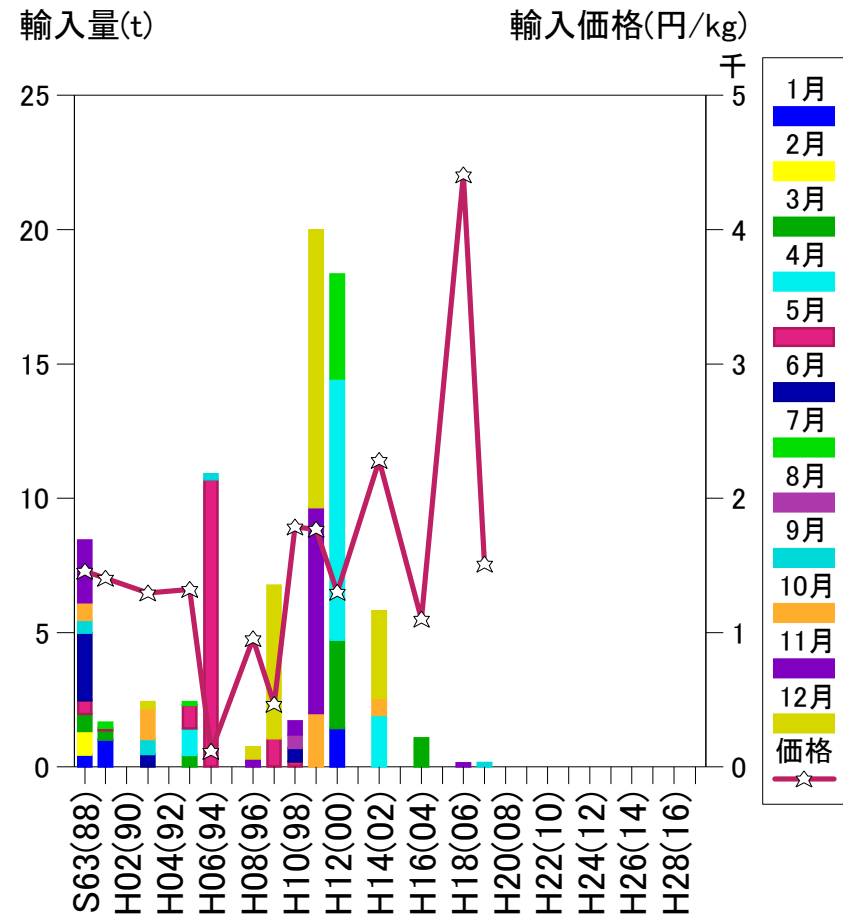
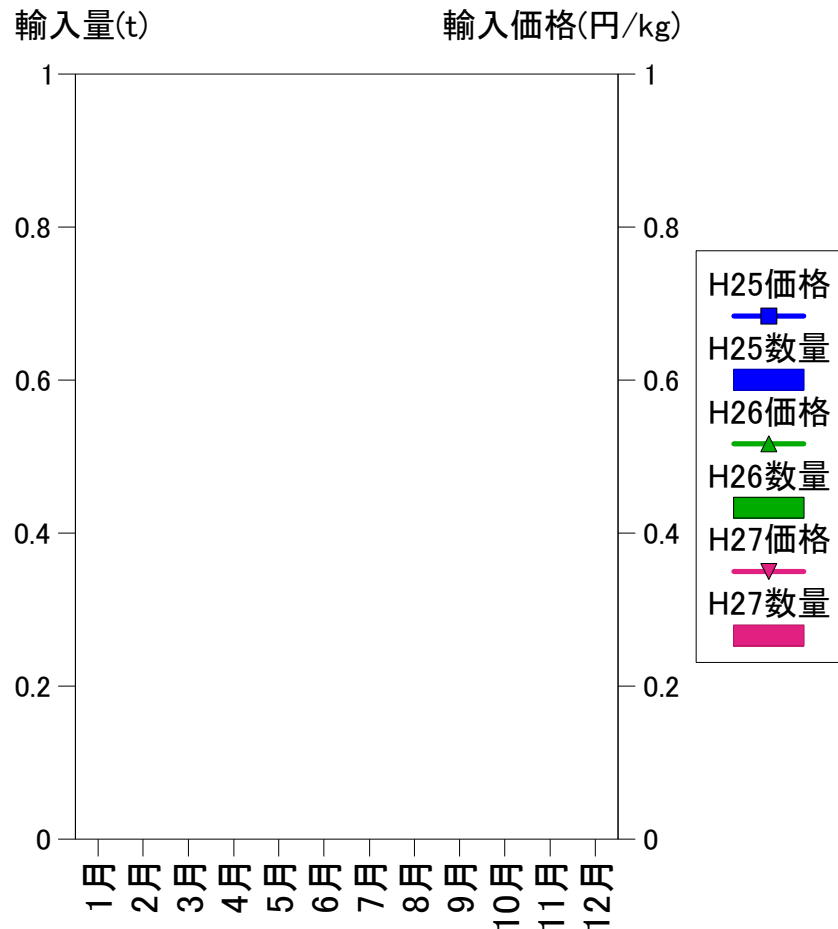
HS 0302.11-000

輸入 ます(冷凍)



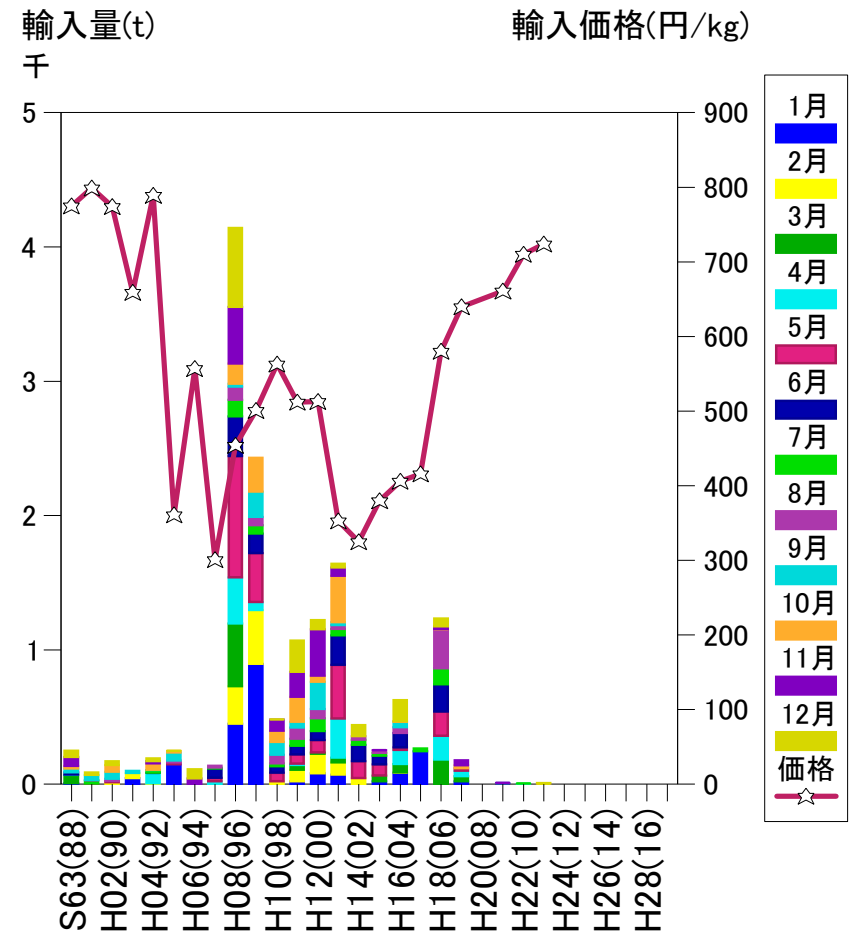
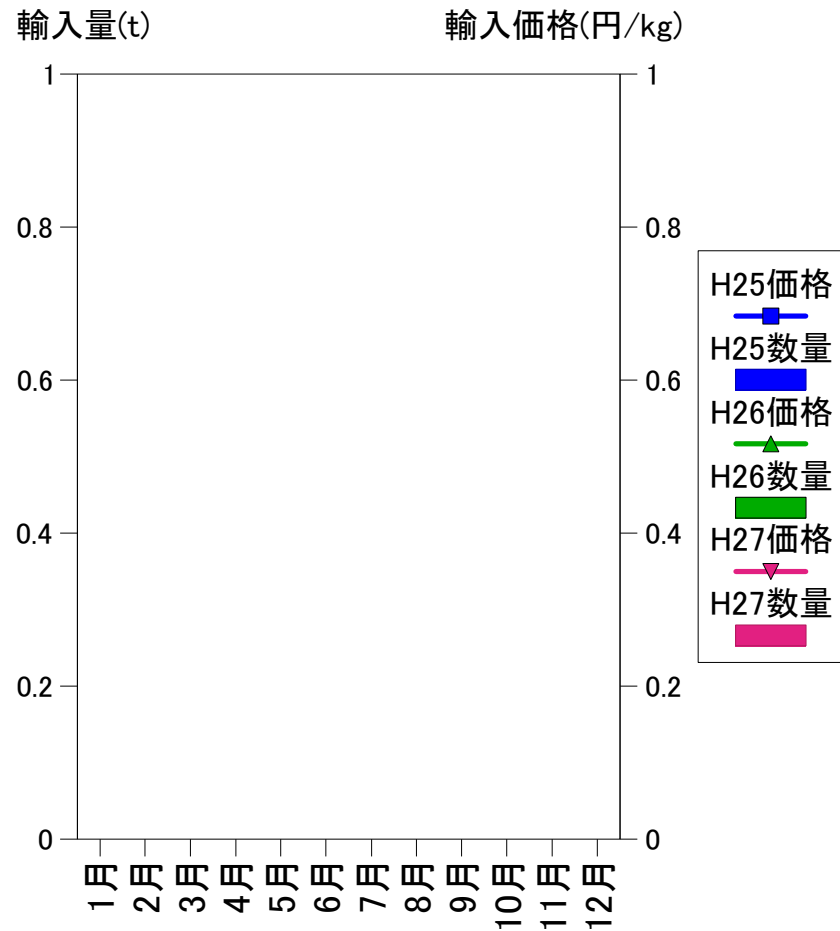
HS 0303.21-000 (H23まで)、0303.14-000 (H24から)

輸入 その他のサケ科(生鮮冷蔵)



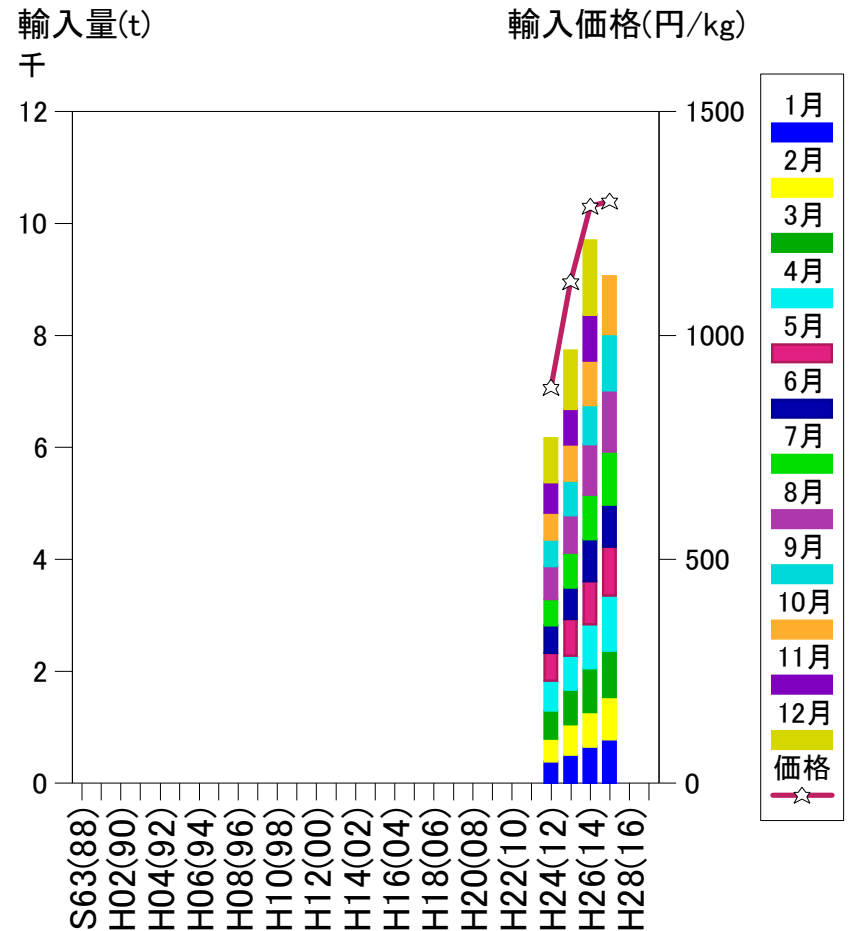
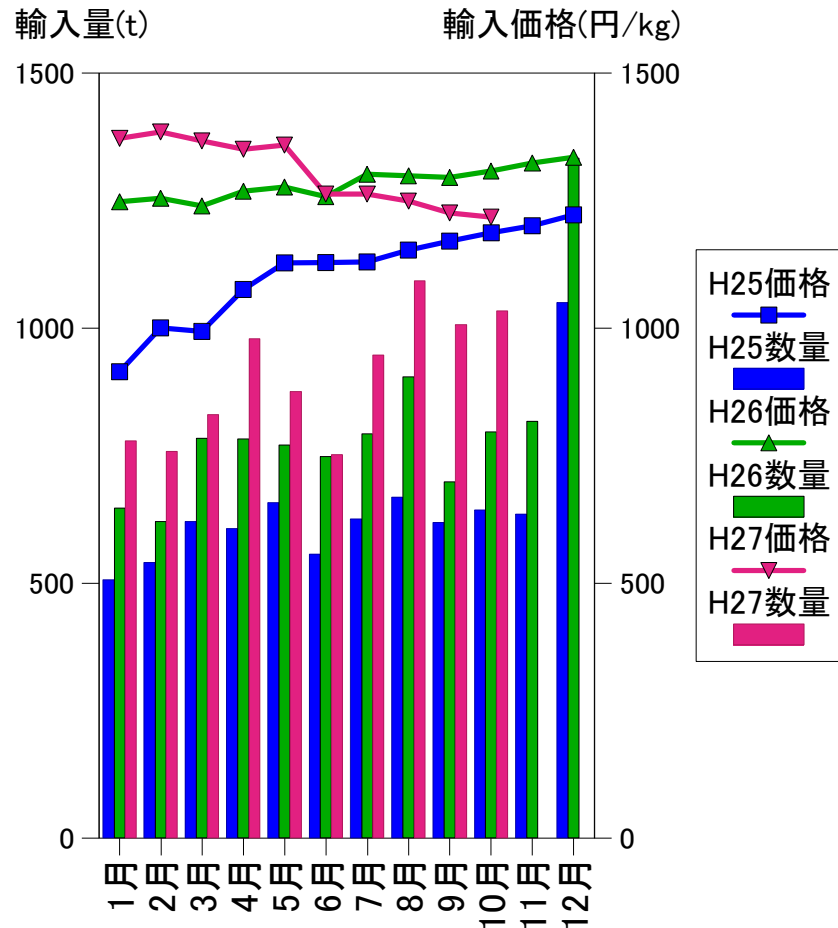
HS 0303.19-000

輸入 その他のサケ科(冷凍)



HS 0303.29-000(H23まで)、0303.19-000(H24から)

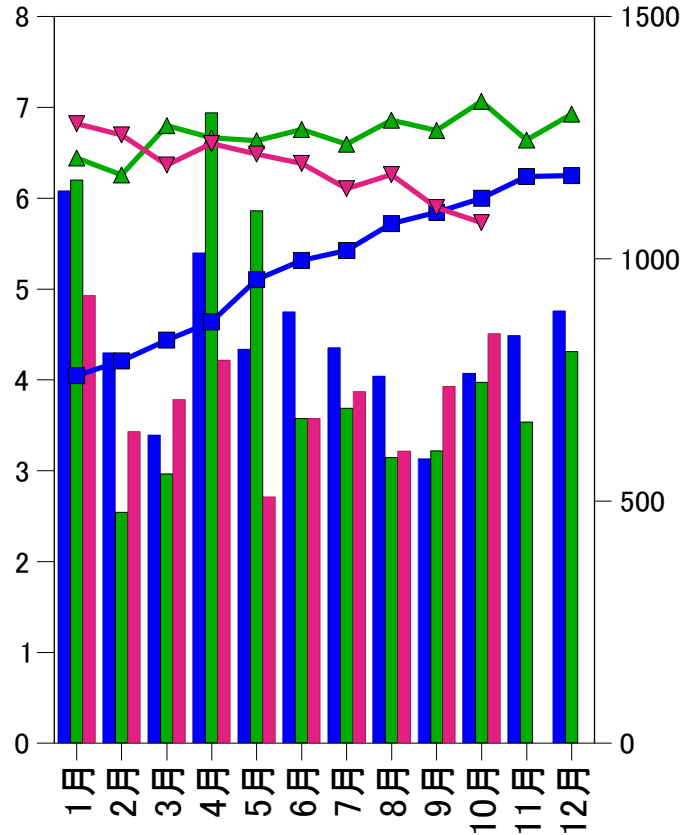
輸入 生フィレ(生鮮冷蔵)塩なし



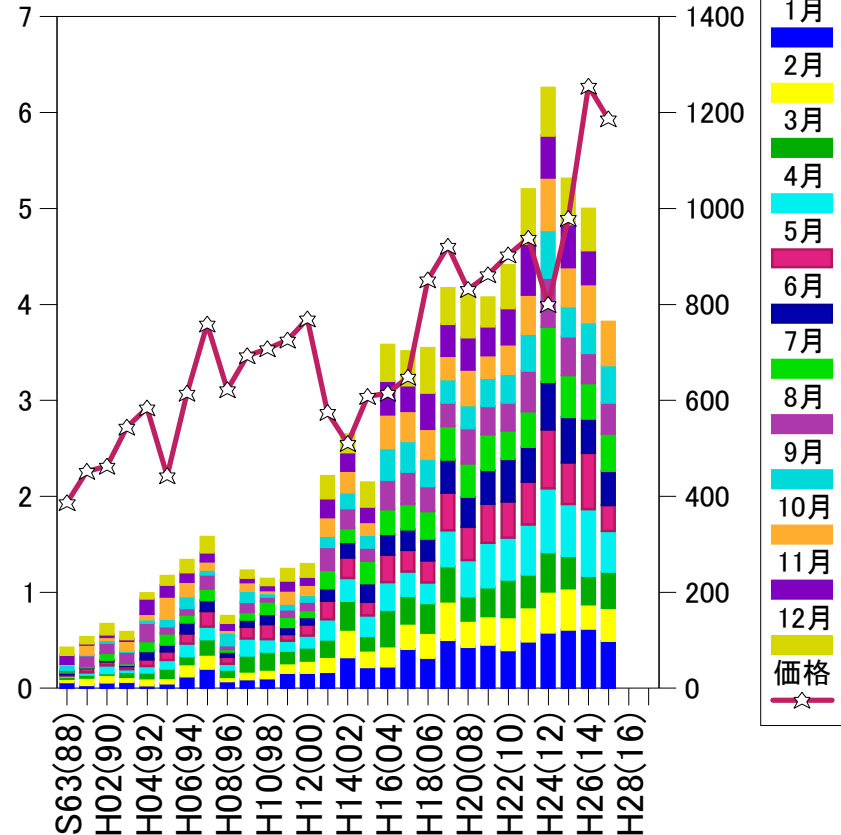
HS 0304.41-000さけフィレ、0304.42-000ますフィレ、0304.52-000その他フィレの合計

輸入 生フィレ(冷凍)塩なし

輸入量(t) 千
輸入価格(円/kg)

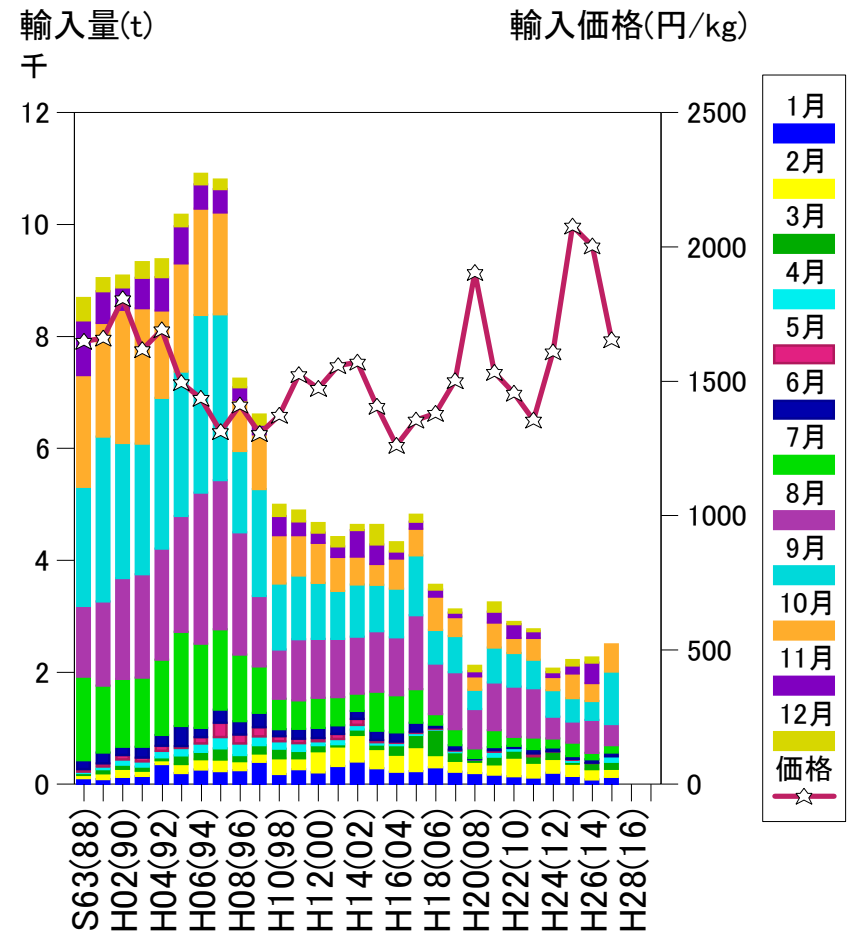
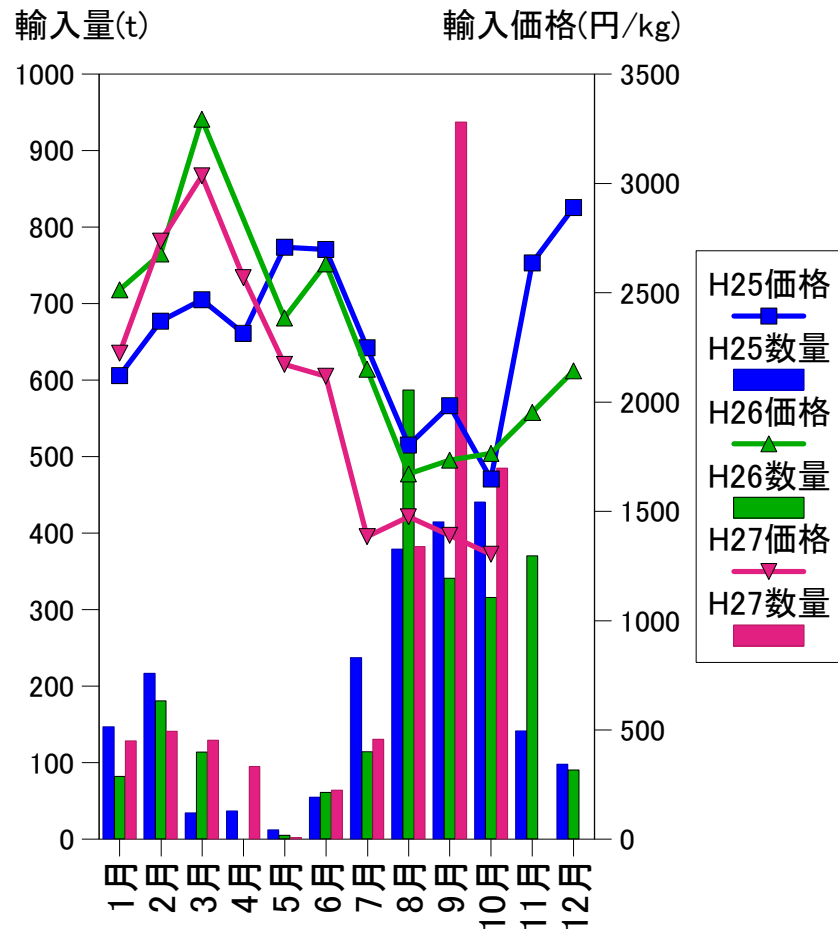


輸入量(t) 万
輸入価格(円/kg)



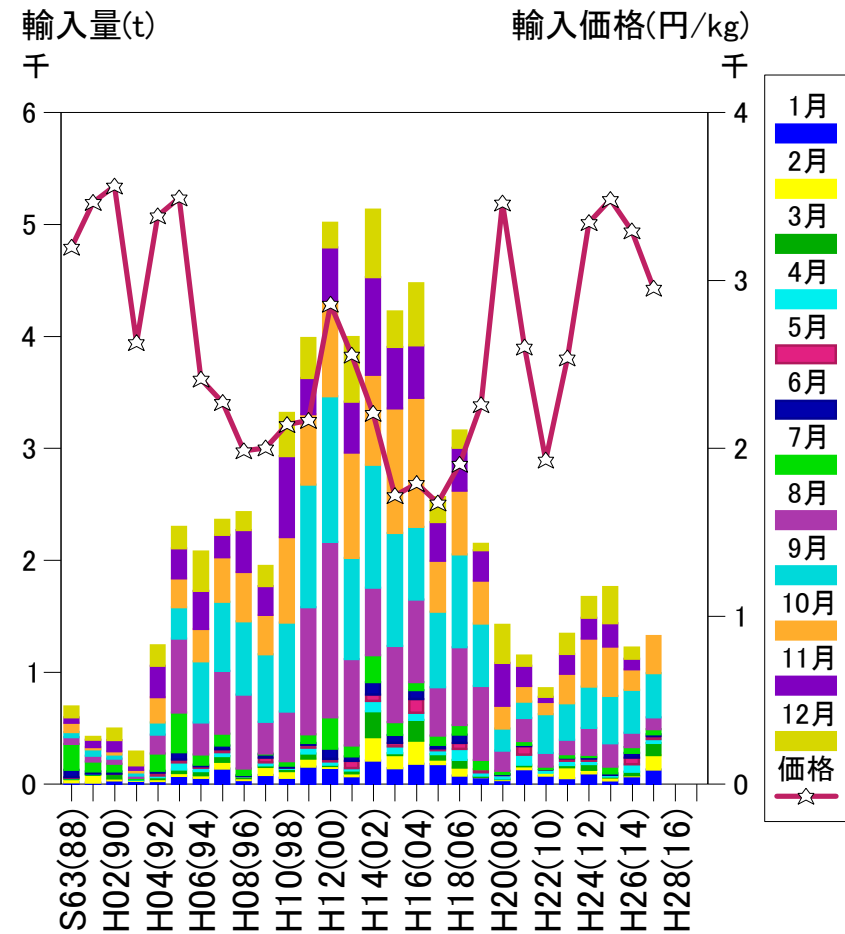
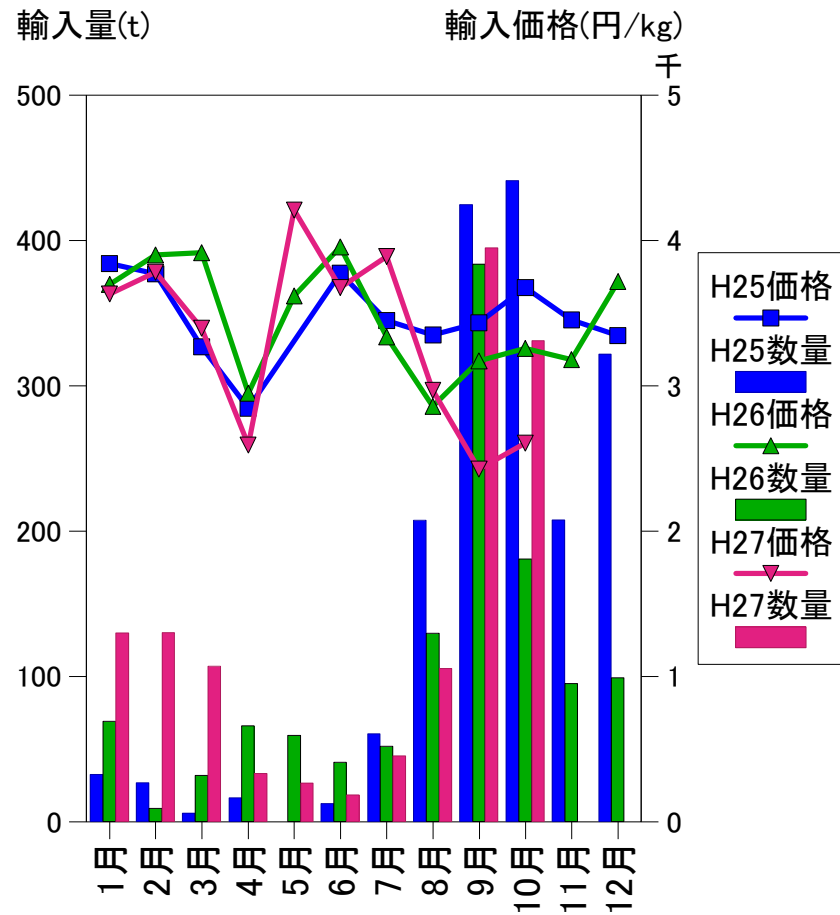
HS 0304.20-099のうちチリ(H18まで), 0304.29-950(H19からH23まで), 0304.81-000, 0304.82-000, 0304.82-220の合計(H24から)

輸入筋子(塩蔵)



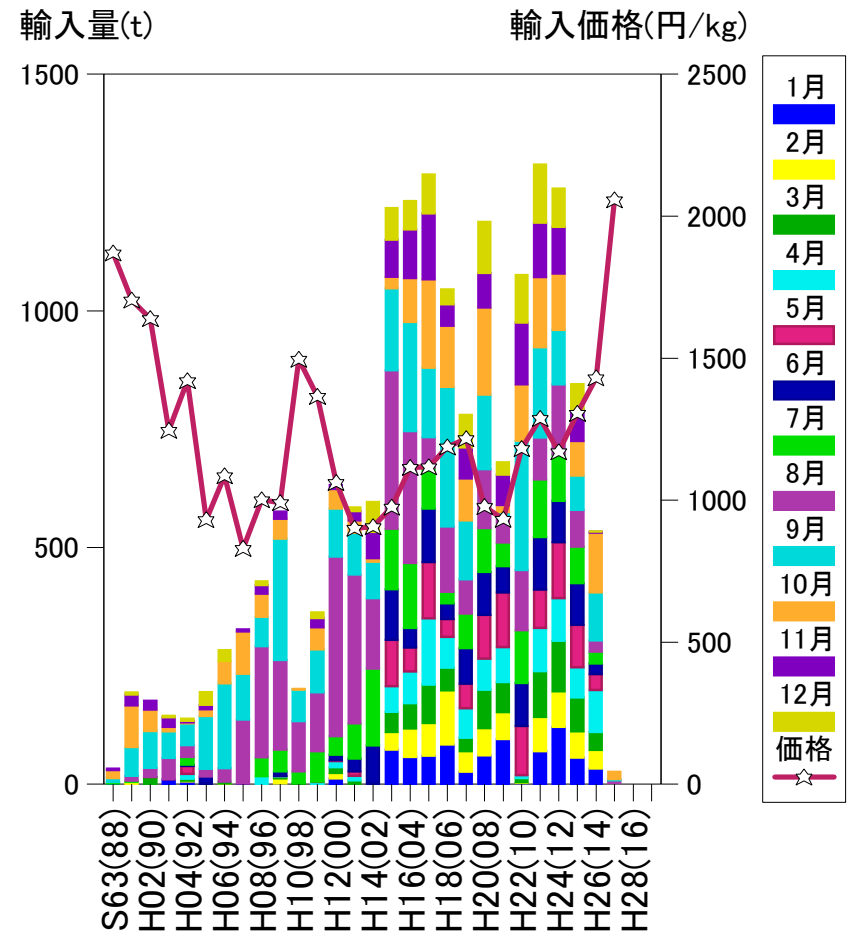
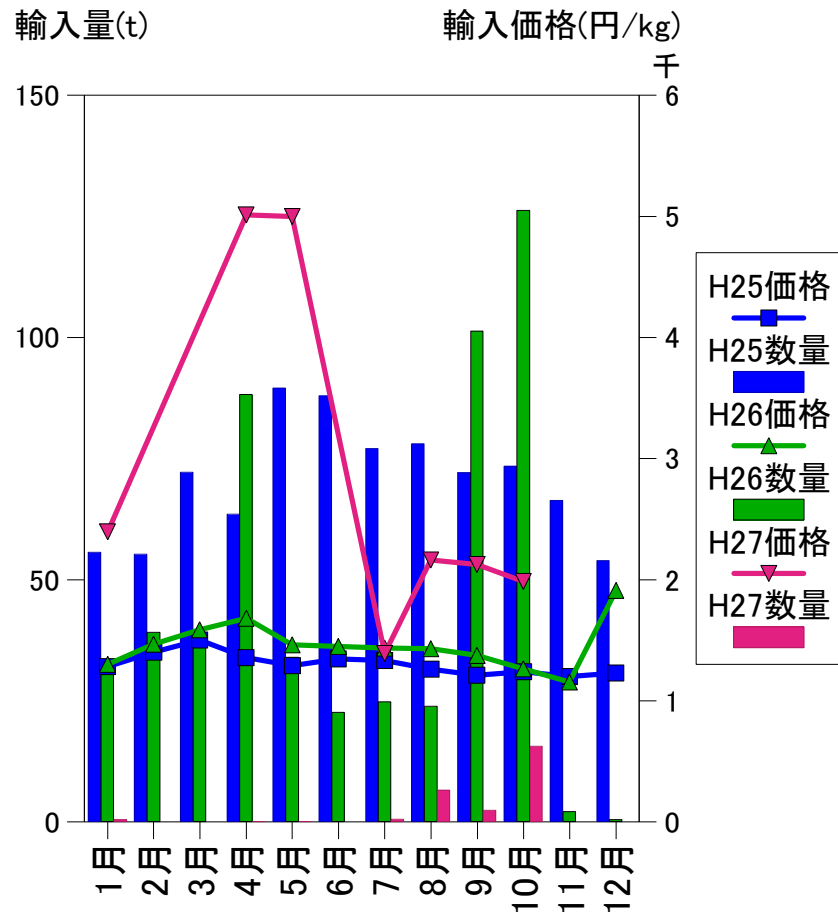
HS 0305.20-030

輸入 いくら



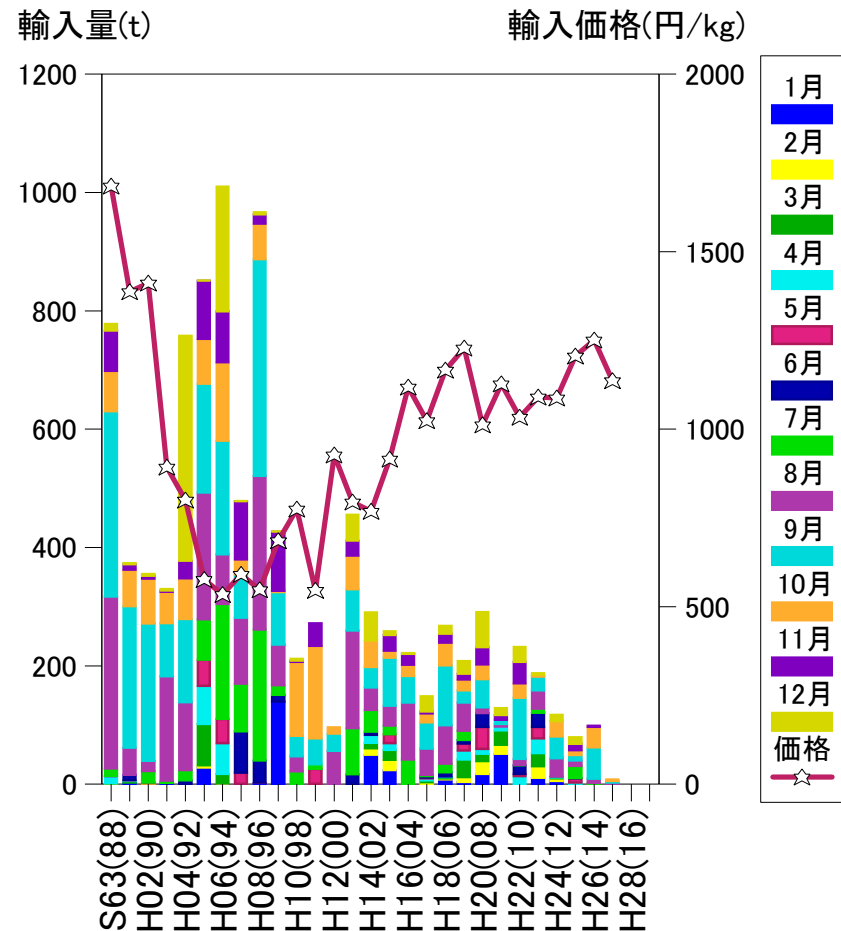
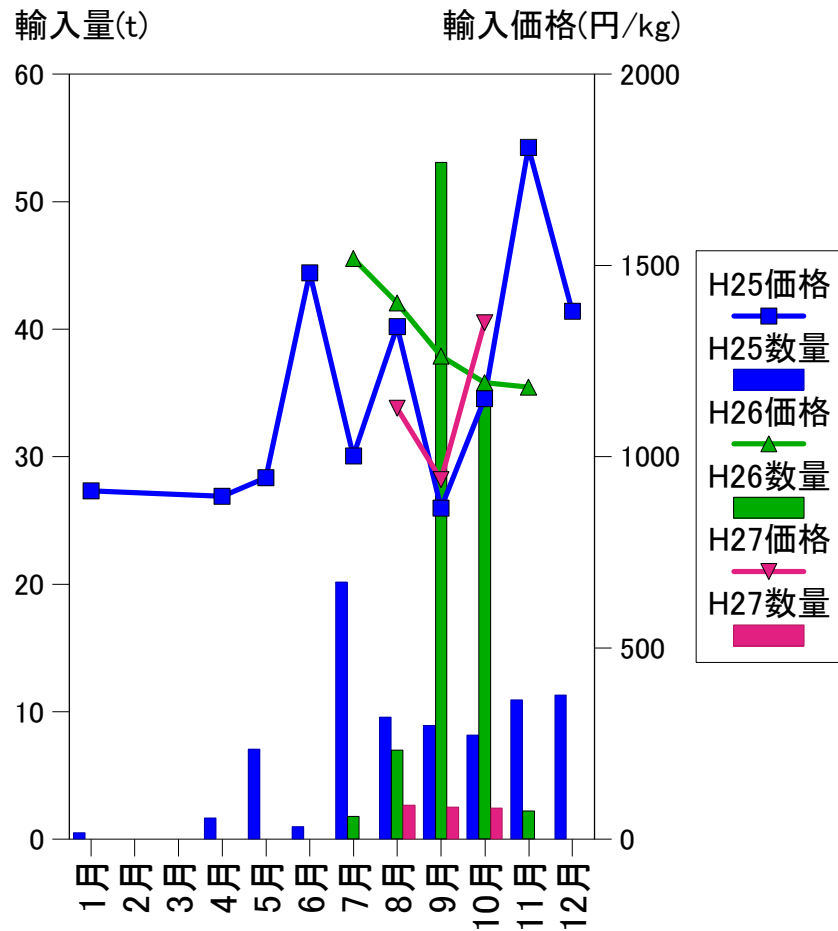
HS 1604.30-010(H23まで)、1604.32-010(H24から)

輸入 塩干さけ・ますファイル



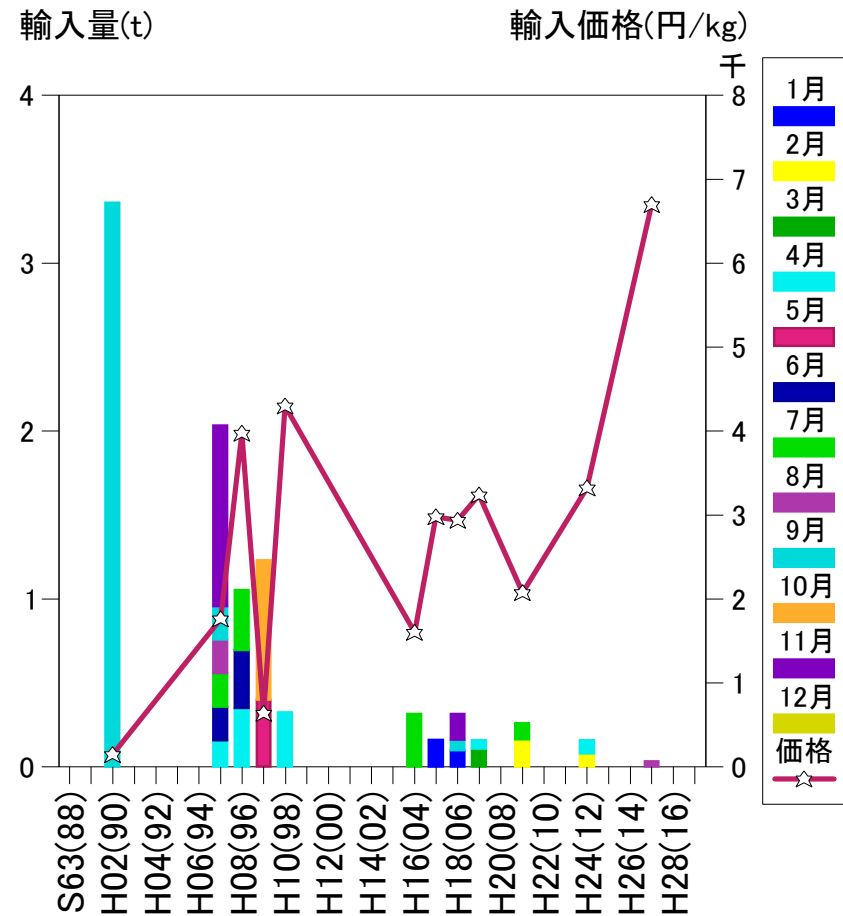
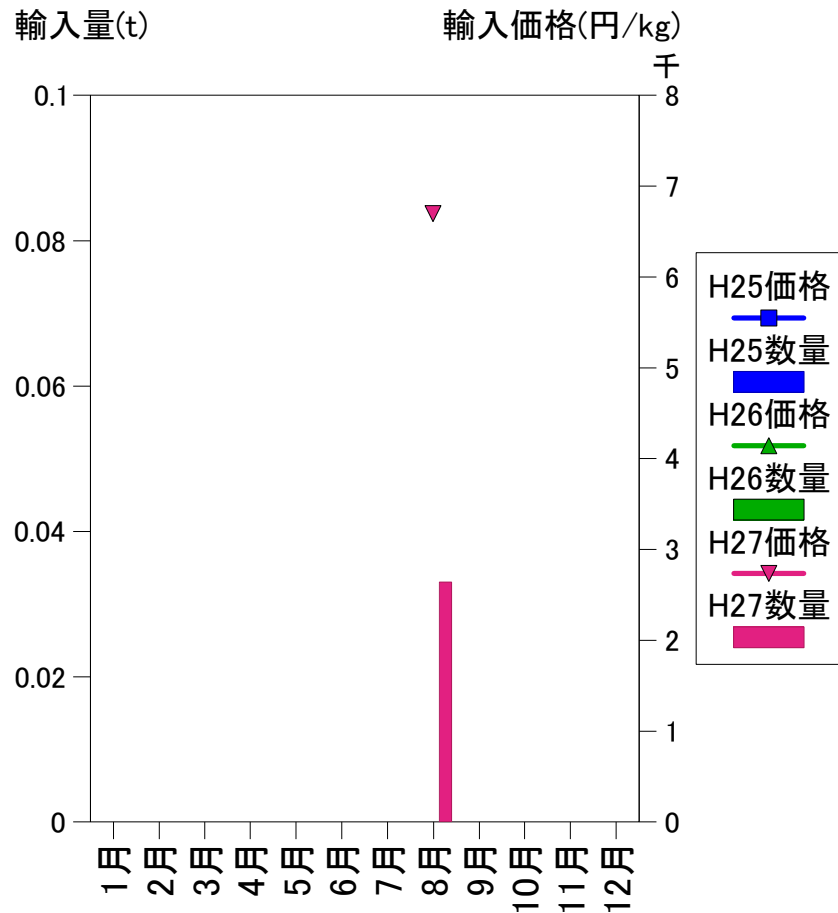
HS 0305.30-010(H23まで)、0305.39-100(H24から)

輸入 塩蔵さけます



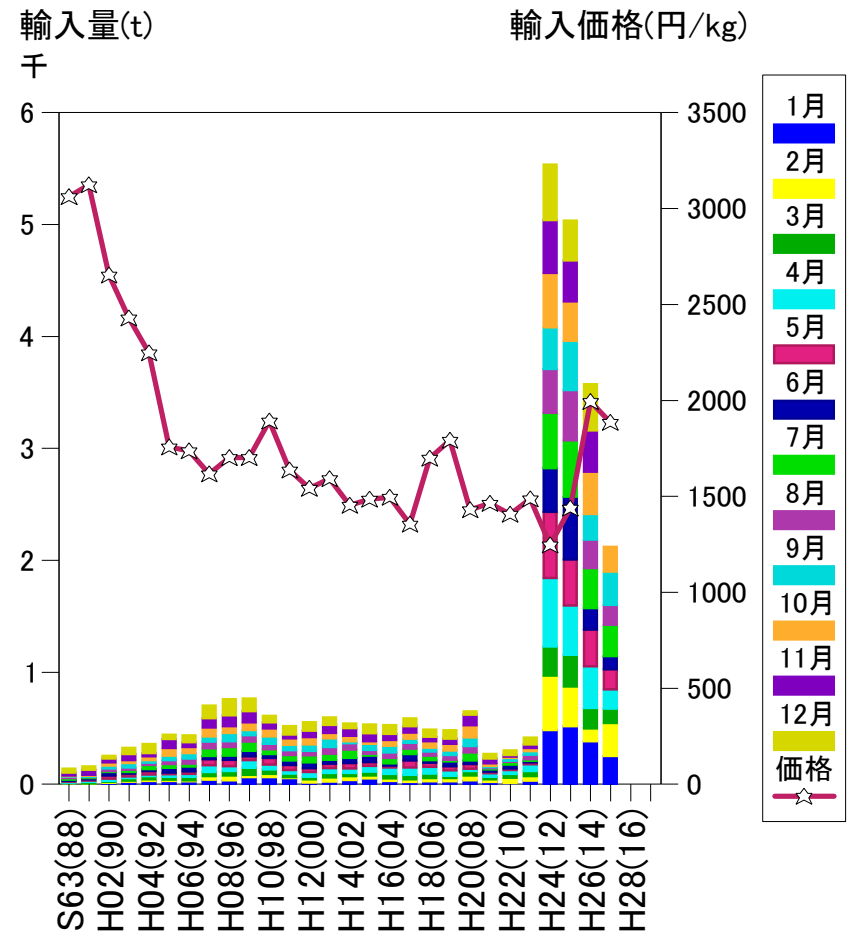
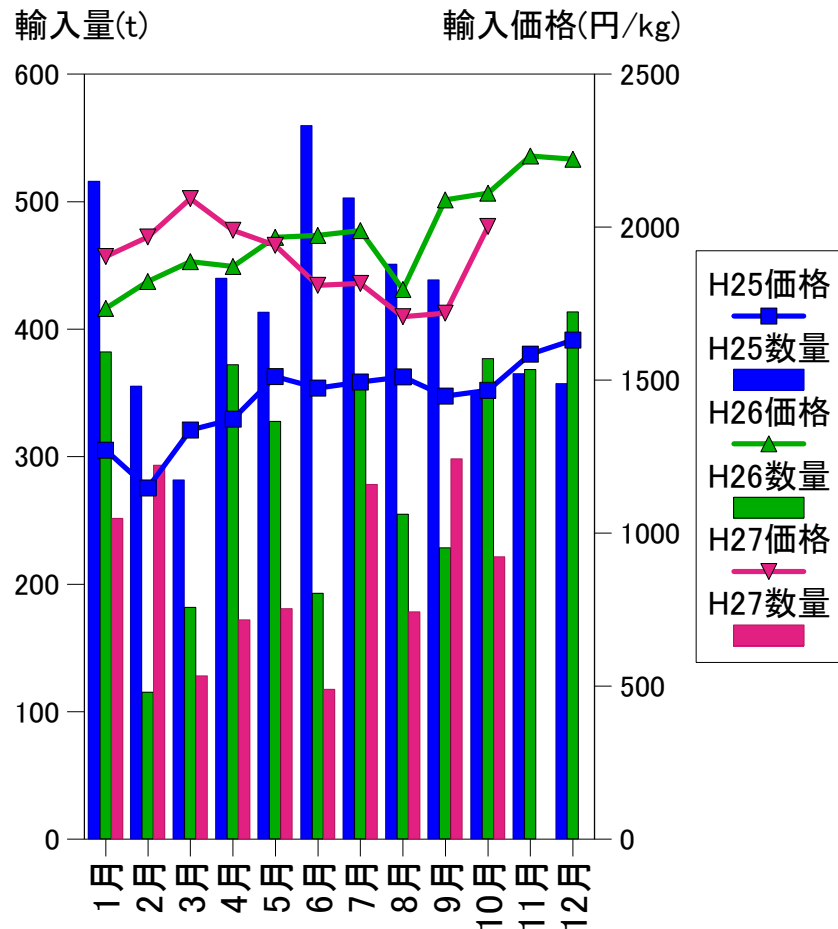
HS 0305.69-010

輸入 さけます(干)



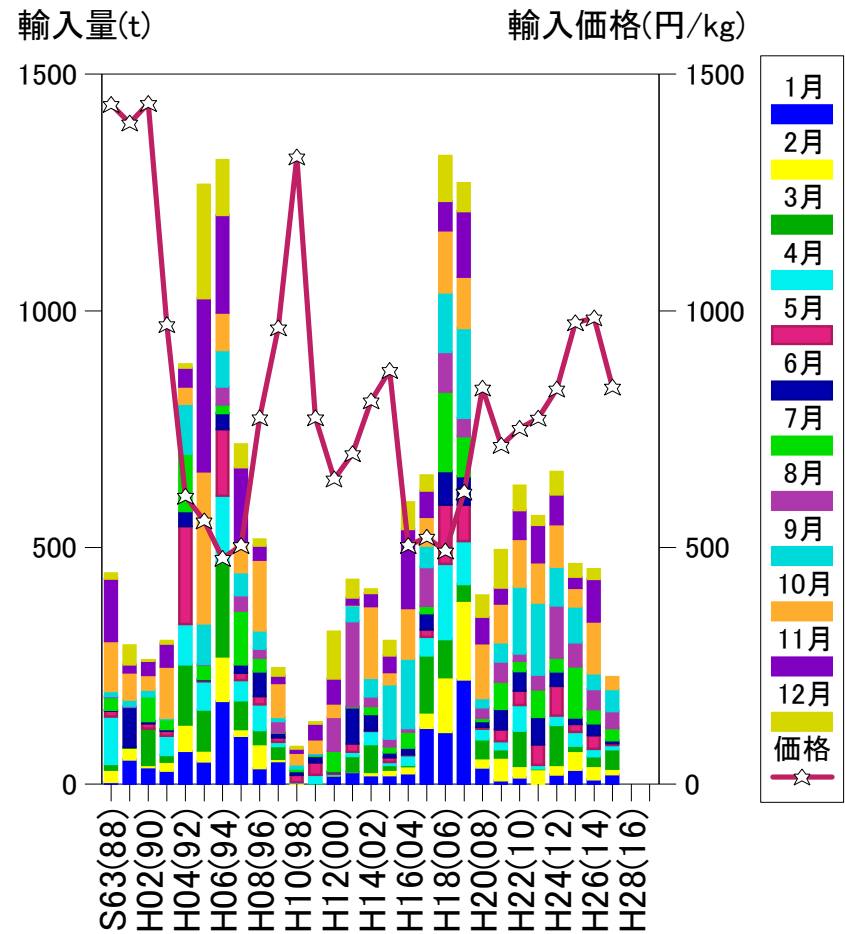
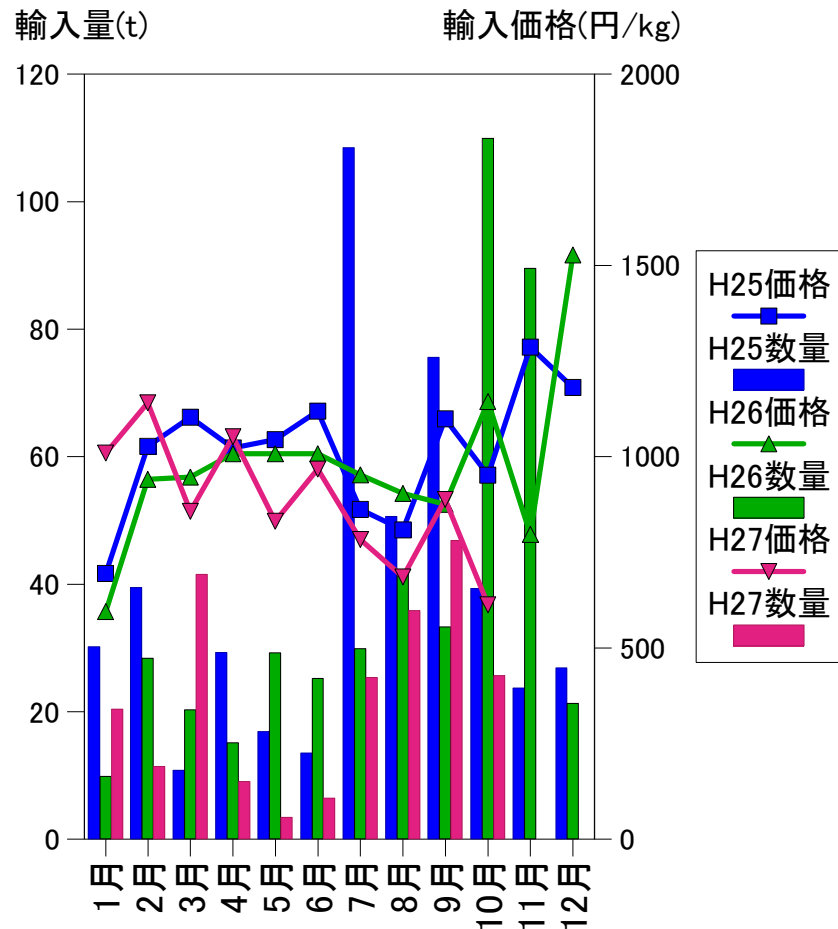
HS 0305.59-010

輸入 スモークサーモン



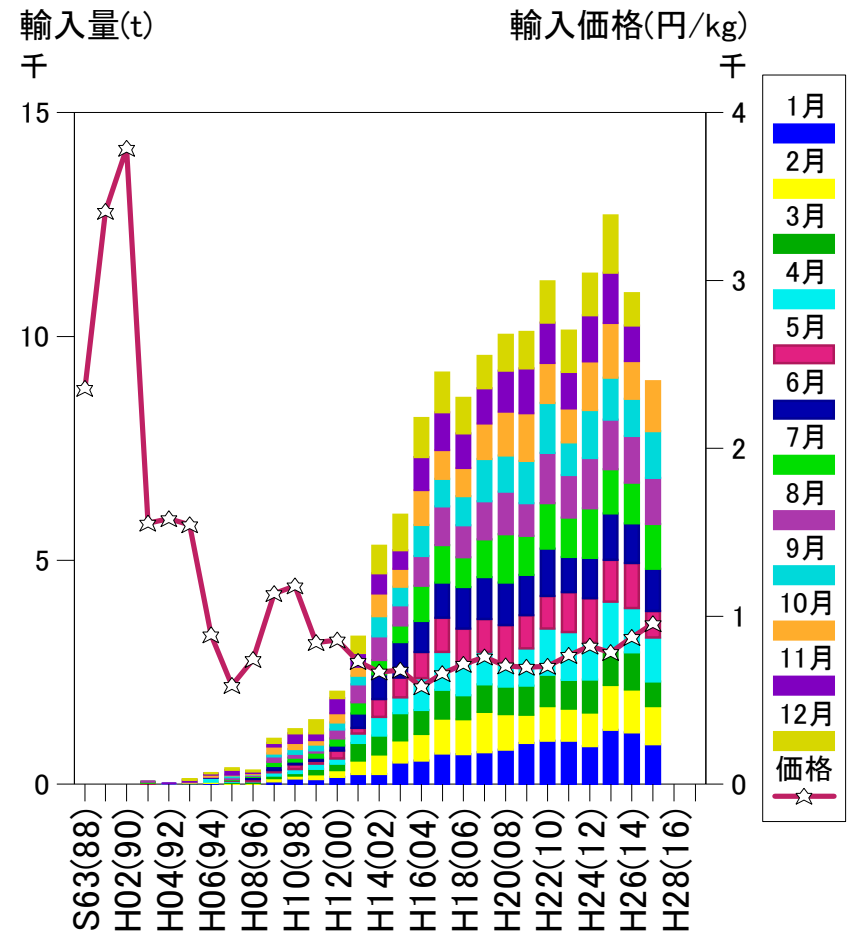
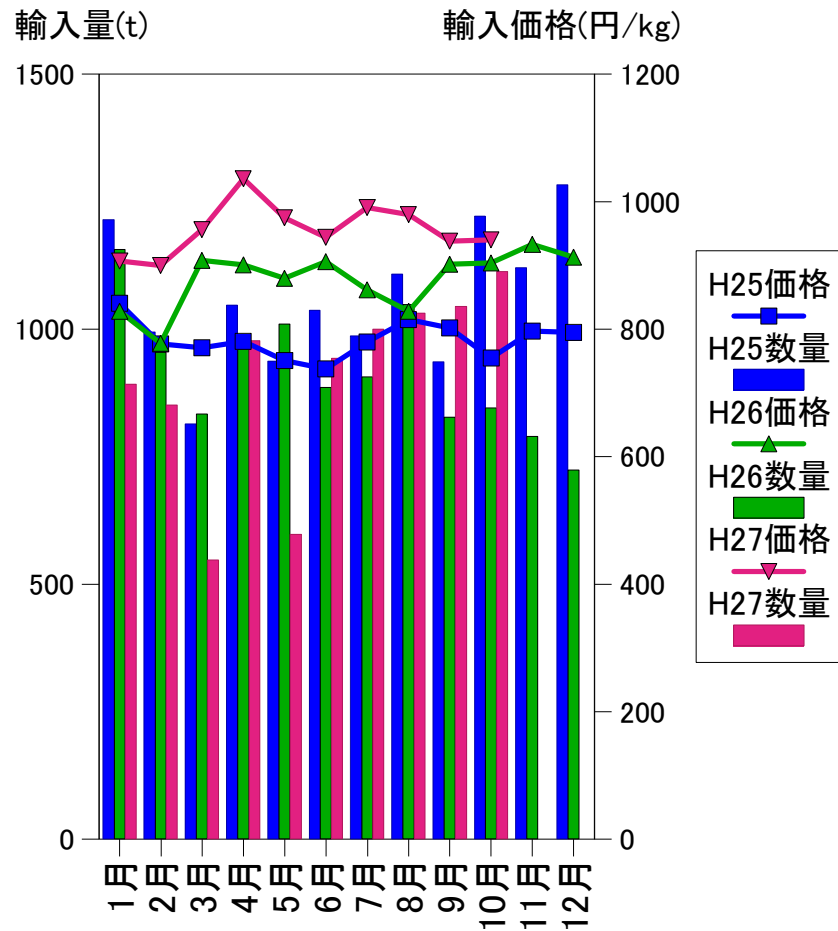
HS 0305.41-000(H23まで)、0305.41-000と0305.43-000ます燻製の合計(H24から)

輸入 さけます缶詰



HS 1604.11-090

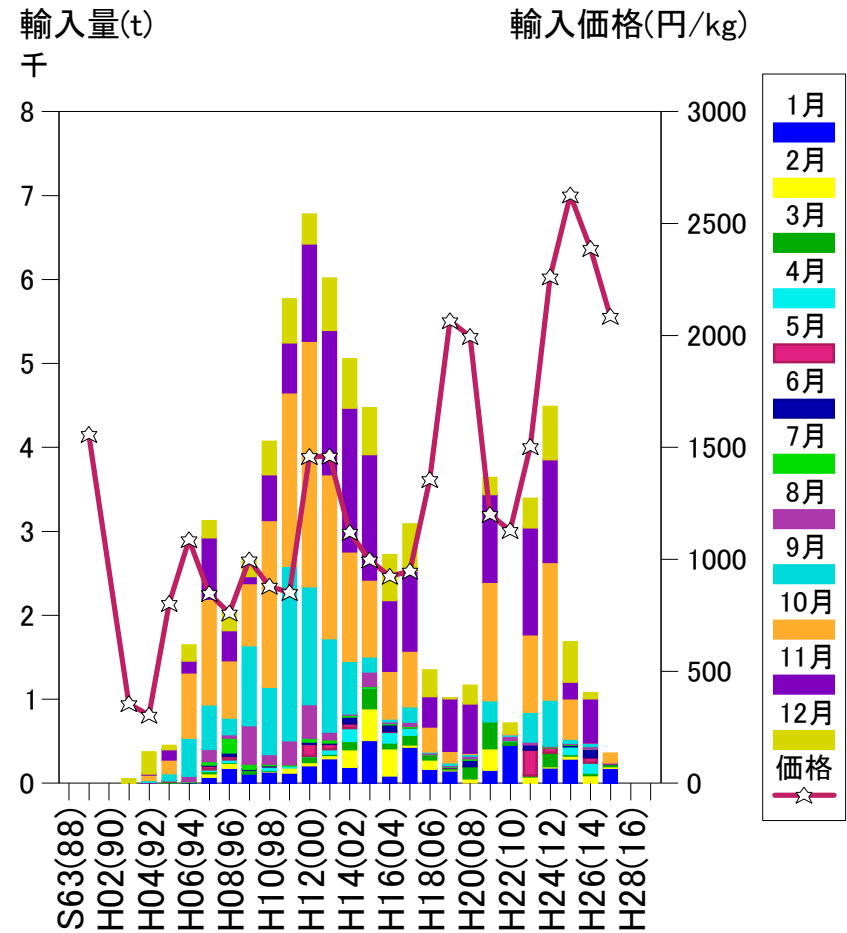
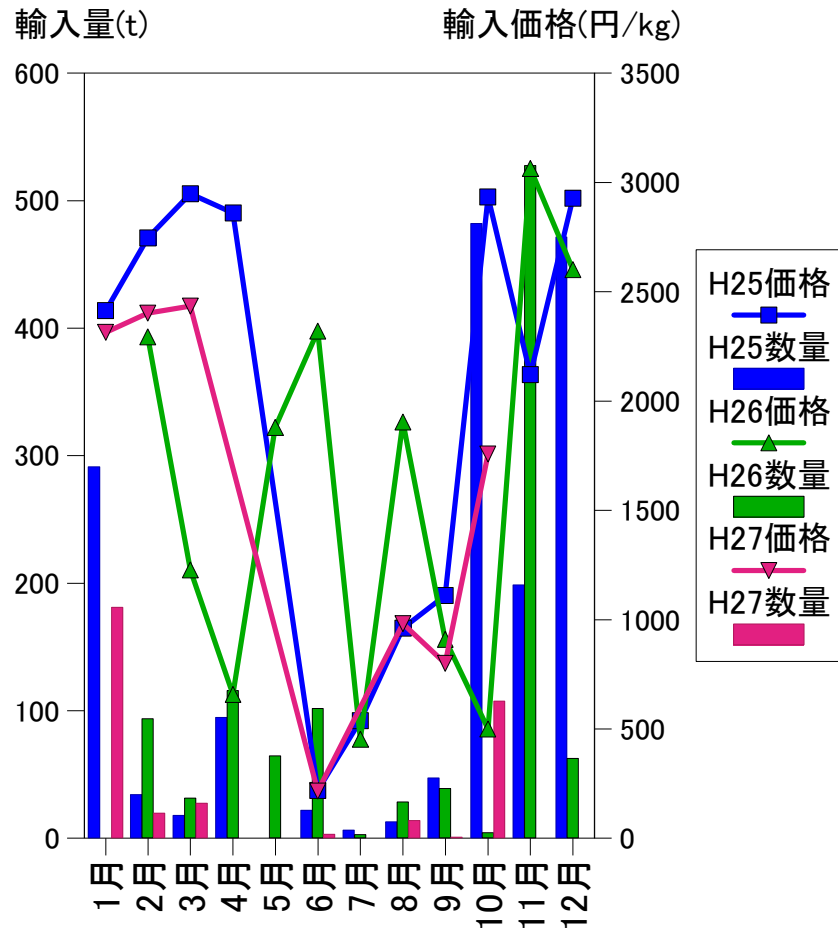
輸入 さけます調整品



HS 1604.11-010

輸入

参考：ロシア冷凍生筋子(推計)



HS 0303.80-090のうちロシア(H23まで)、0303.90-090のうちロシア(H24から)